

THIS MAP WAS PREPARED FOR ASSESSMENT PURPOSE ONLY.

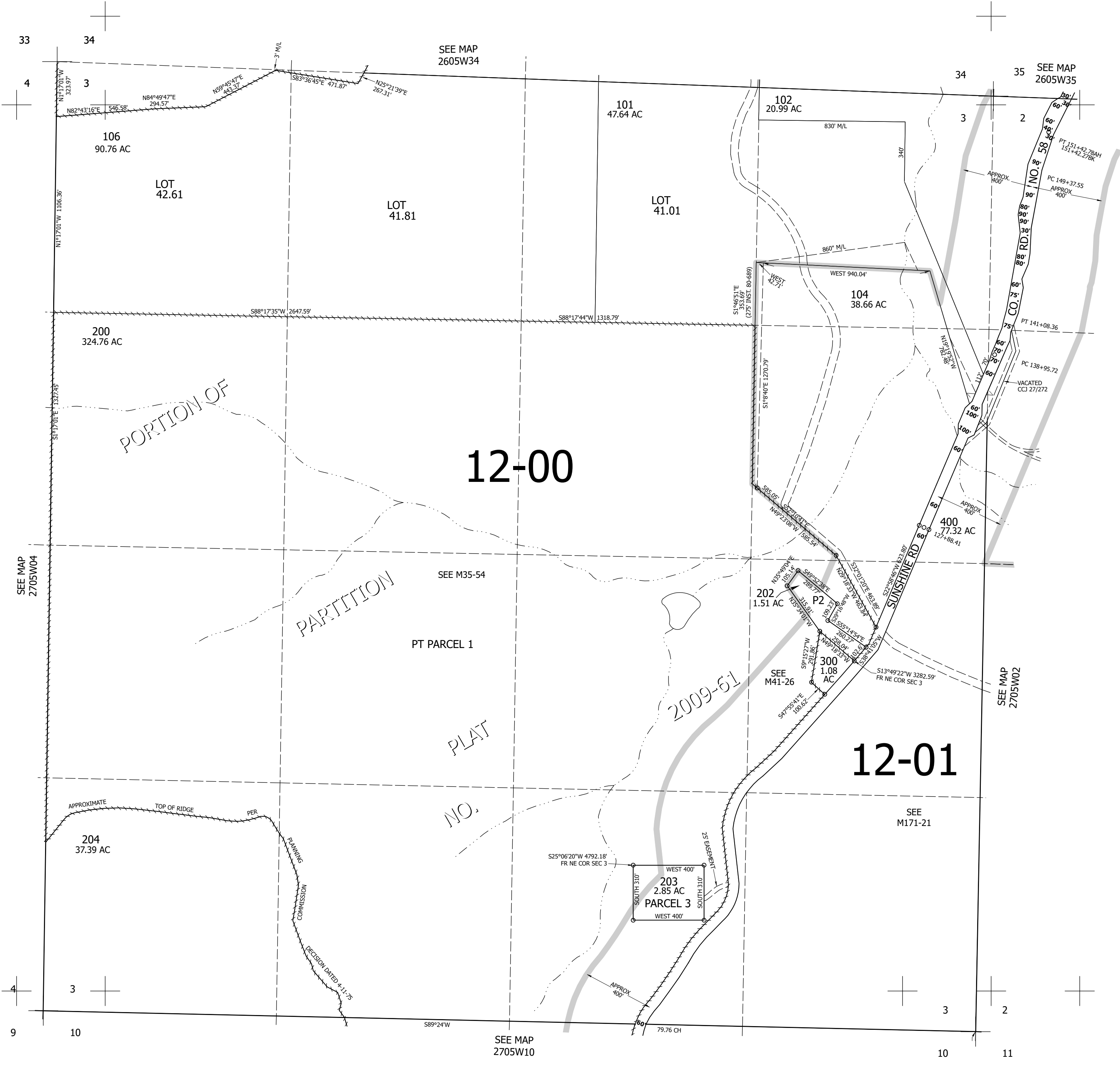
Upper Left:
123°17'24"W 43°15'36"N
4178245E 593043N ft

SEC.03 T.27S. R.05W. W.M.
DOUGLAS COUNTY
1" = 400'

Date Exported 2023-08-16

270503

CANCELLED NOS:
105 401 201
103 100



270503

Lower Right:
123°15'35"W 43°14'30"N
4186094E 586087N ft