

THIS MAP WAS PREPARED FOR ASSESSMENT PURPOSE ONLY.

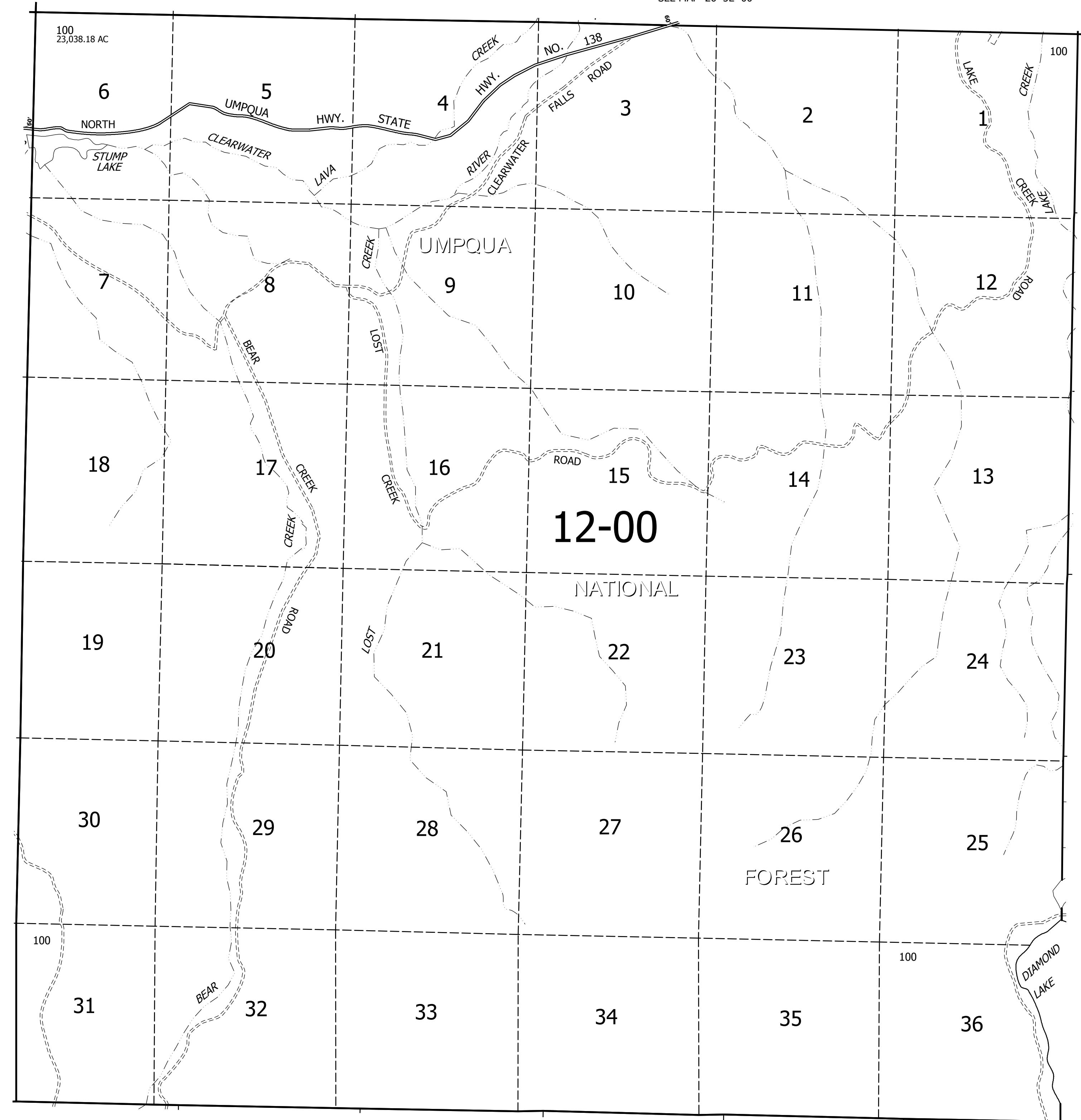
T.27S. R.5E. W.M. DOUGLAS COUNTY

REVISED ON 4-30-12

27 5E 00

1" = 2000'

SEE MAP 26 5E 00



CANCELLED NO'S

SEE MAP 27 4E 00

SEE MAP 27 6E 00

SEE MAP 28 5E 00

27 5E 00