

THIS MAP WAS PREPARED FOR ASSESSMENT PURPOSE ONLY.

SW1/4 SEC.21 T.27S. R.4W. W.M. DOUGLAS COUNTY

REVISED ON 3-24-16

27 4 21C

1" = 200'

1/4 COR

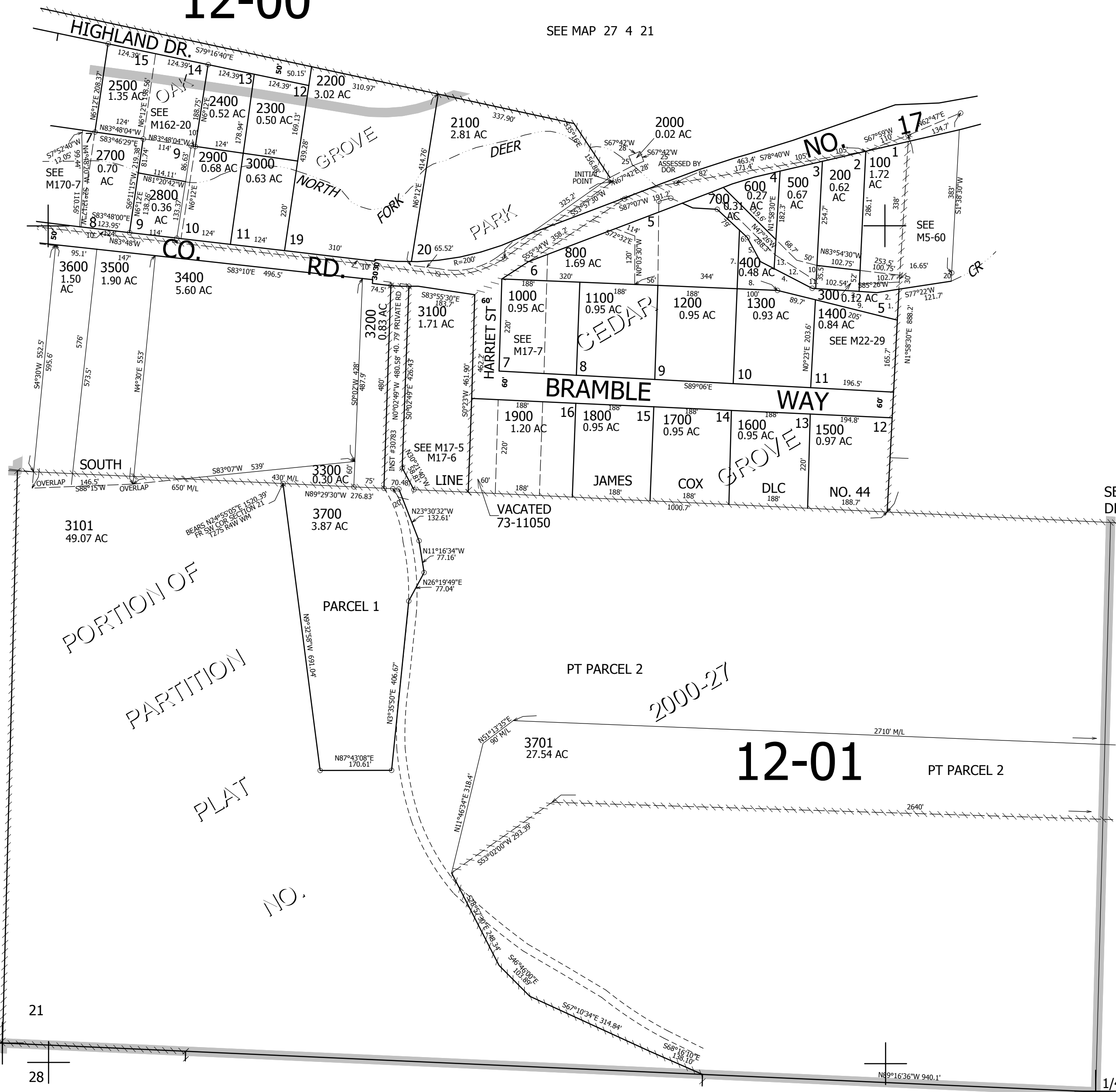
CEN SEC NE COR DLC NO. 44

12-00

SEE MAP 27 4 21

CANCELLED NO'S 2600 900 3702 2801 2802 3102

SEE MAP 27 4 20DA



SEE MAP 27 4 20

SEE MAP 27 4 21

- PARCEL 400
1. N1°58'30"E 72.1'
  2. S77°06'W 55.1'
  3. N86°08'W 163'
  4. N64°53'W 131.4'
  5. N29°52'W 67.3'
  6. N49°04'W 21.8'
  7. S2°31'W 139'
  8. S89°06'E 100'
  9. S78°29'30"E 294.7'

- PARCEL 500
10. S1°58'30"W 56'
  11. N86°08'W 13.2'
  12. N64°53'W 96.6'
  13. N1°58'30"E 65.9'

SE COR DLC NO. 44

20

21

29

28

1/4 COR

570,000

SEE MAP 27 4 28

4,207,000

27 4 21C