

THIS MAP WAS PREPARED FOR ASSESSMENT PURPOSE ONLY.

Upper Left:  
123°11'34"W 43°12'26"N  
4203487E 573026N ft

NE1/4 SE1/4 SEC.20 T.27S. R.04W. W.M.  
DOUGLAS COUNTY  
1" = 100'

Date Exported 2026-03-05

270420DA

CANCELLED NOS:  
1900M1 901 1001  
100 1002

1/16 COR

SEE MAP  
2704W20

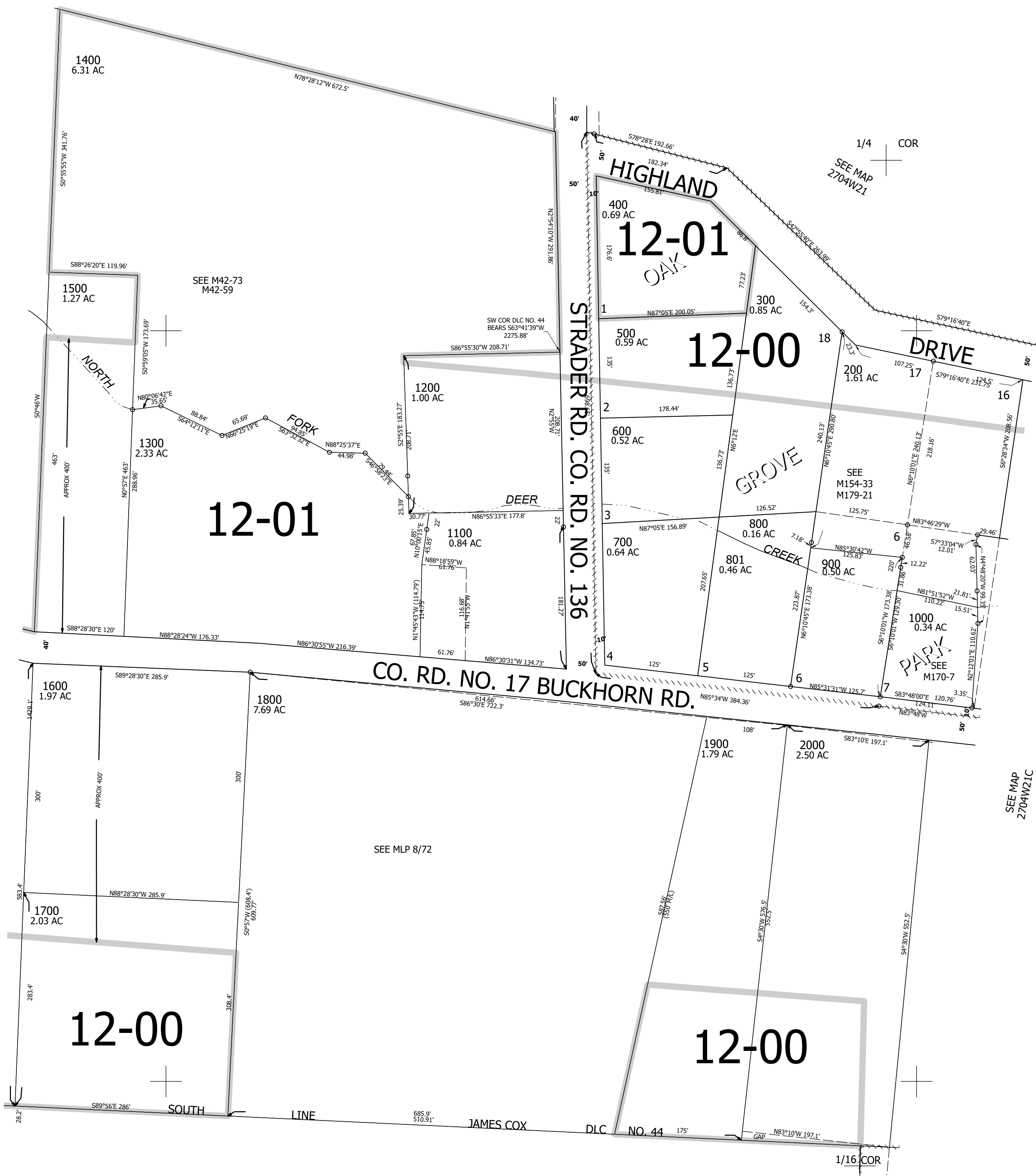
1/4 COR

SEE MAP  
2704W21

SEE MAP  
2704W21C

1/16 COR

1/16 COR



270420DA

Lower Right:  
123°11'7"W 43°12'10"N  
4205459E 571288N ft