

THIS MAP WAS PREPARED FOR ASSESSMENT PURPOSE ONLY.

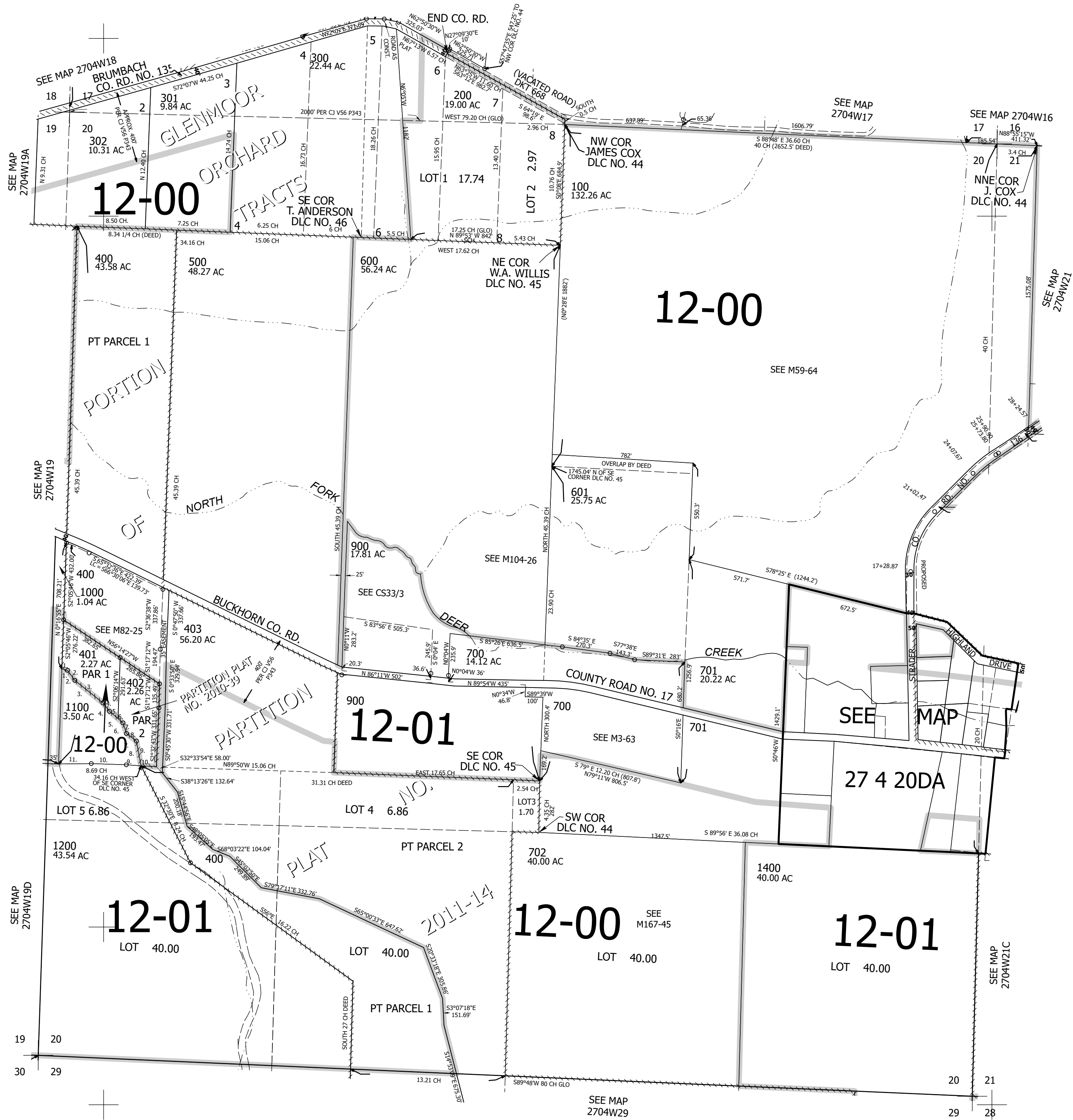
Upper Left:  
123°12'43"W 43°13'N  
4198514E 576594N ft

SEC.20 T.27S. R.04W. W.M.  
DOUGLAS COUNTY  
1" = 400'

Date Exported 2026-03-26

270420  
& INDEX

CANCELLED NOS:  
501 800 1300  
602 703



270420  
& INDEX

Lower Right:  
123°10'54"W 43°11'54"N  
4206363E 569639N ft