

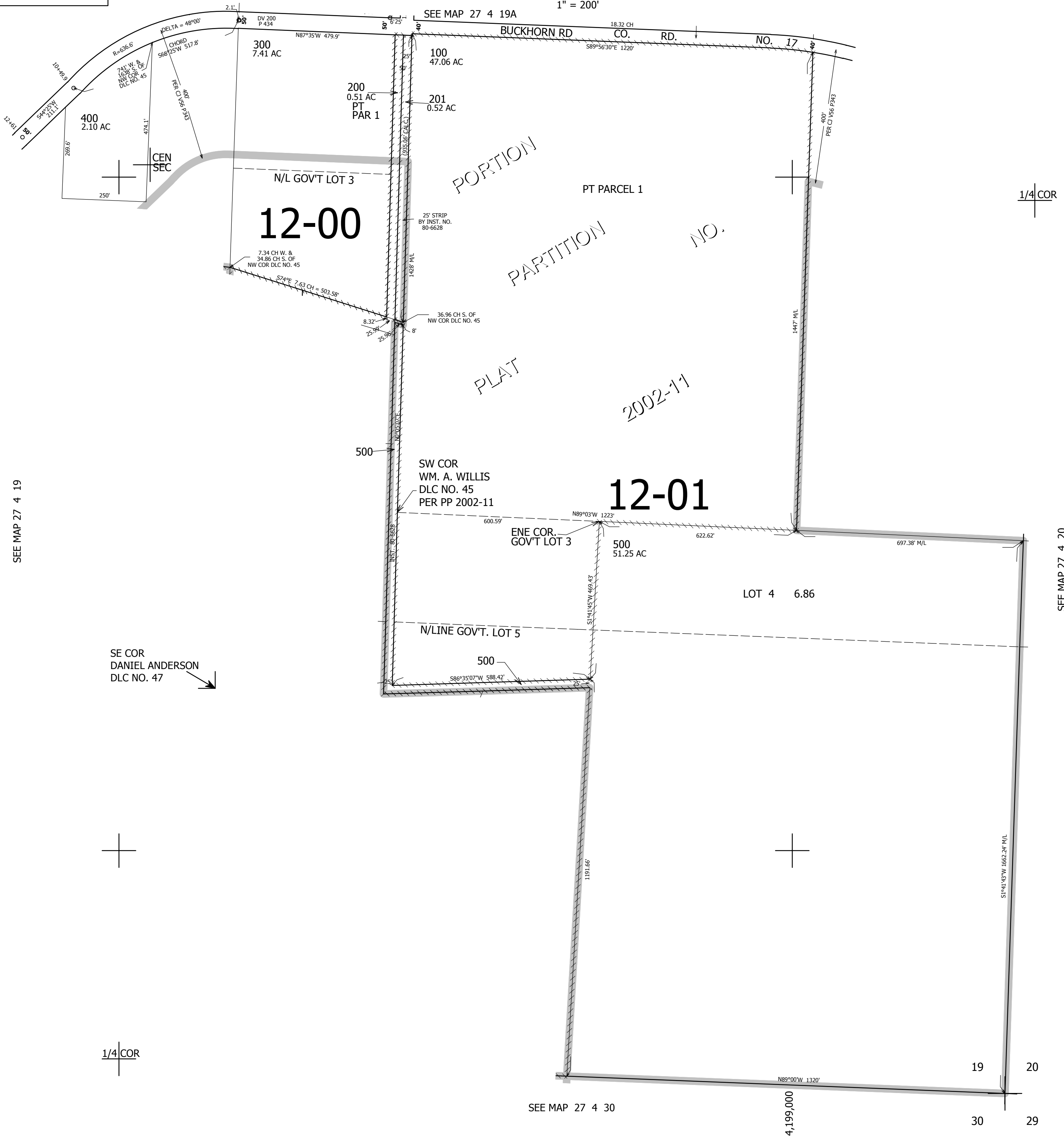
SE1/4 SEC.19 T.27S. R.4W. W.M.  
DOUGLAS COUNTY

REVISED ON  
1-24-18

27 4 19D

THIS MAP WAS PREPARED FOR  
ASSESSMENT PURPOSE ONLY.

1" = 200'



CANCELLED NO'S  
600 202

27 4 19D