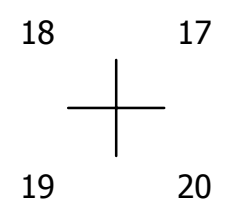
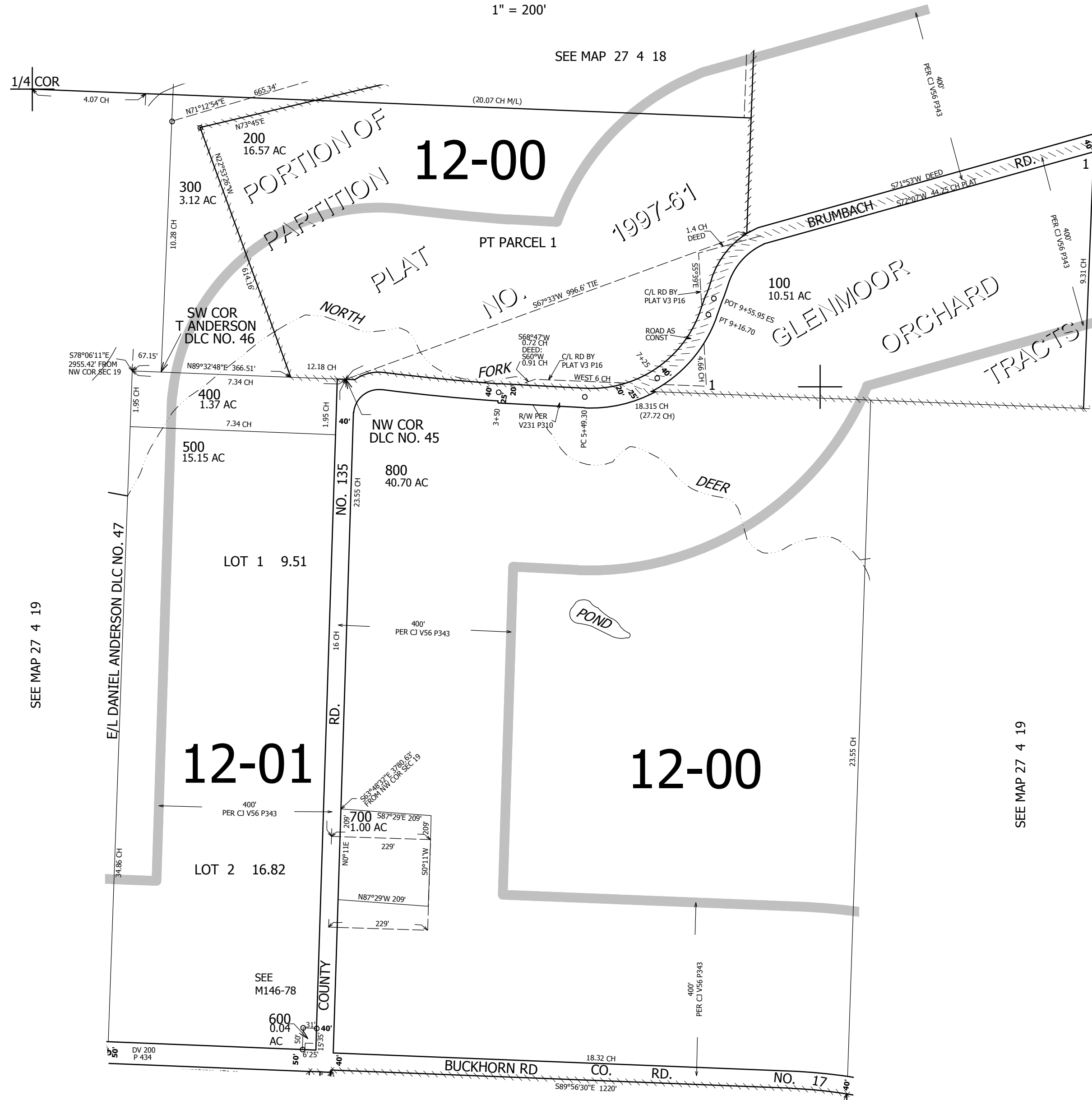


THIS MAP WAS PREPARED FOR ASSESSMENT PURPOSE ONLY.

NE1/4 SEC.19 T.27S. R.4W. W.M.
DOUGLAS COUNTY
1" = 200'

REVISED ON
1-24-18

27 4 19A

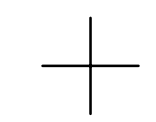
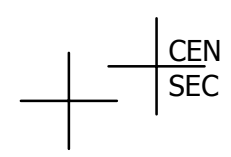


CANCELLED NO'S
701 801 101
501

SEE MAP 27 4 19

SEE MAP 27 4 19

SEE MAP 27 4 19D



573,000

4,199,000

27 4 19A