

THIS MAP WAS PREPARED FOR ASSESSMENT PURPOSE ONLY.

Upper Left:
123°9'12"W 43°13'49"N
4214260E 581032N ft

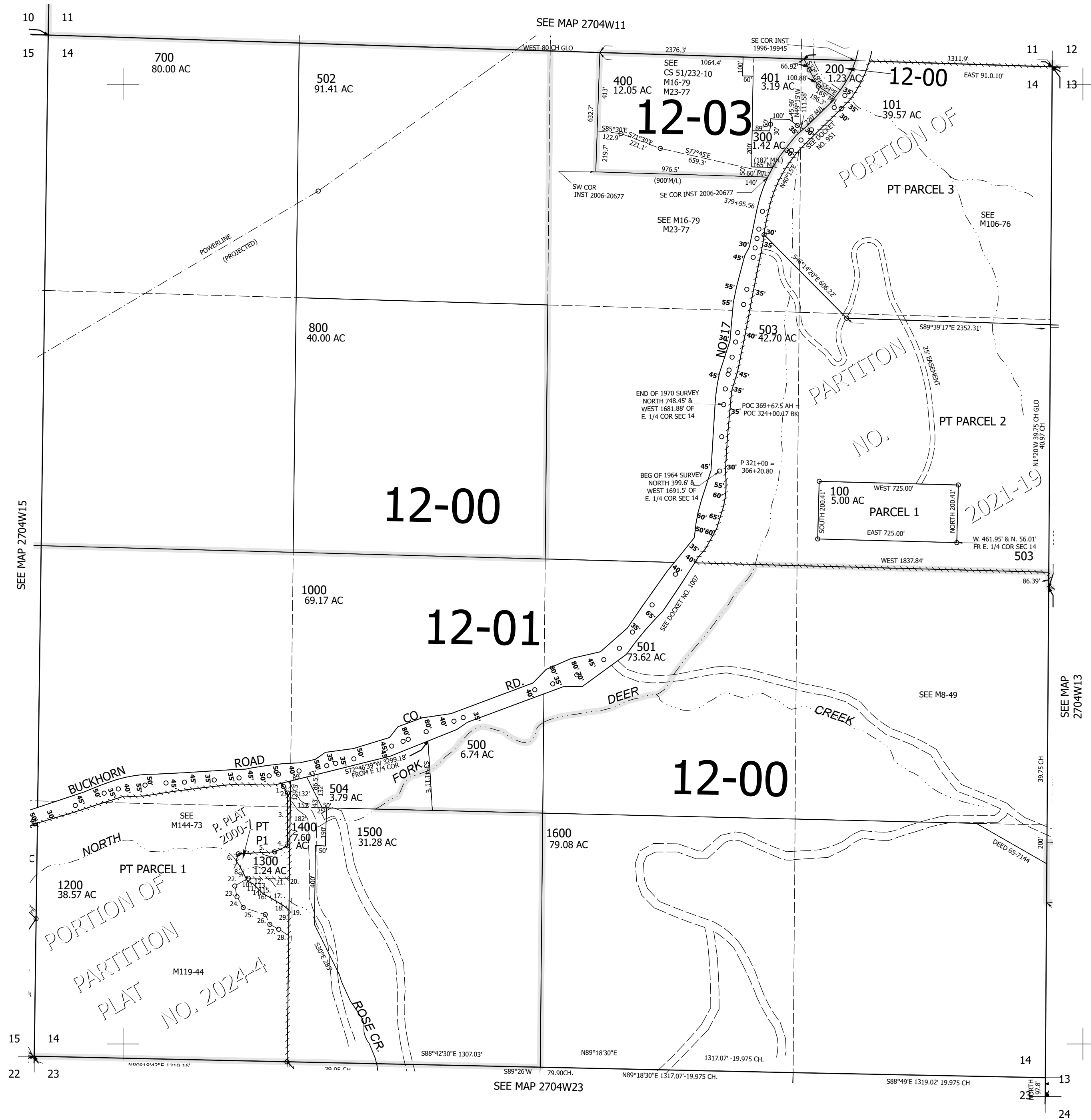
SEC.14 T.27S. R.04W. W.M.
DOUGLAS COUNTY
1" = 400'

Date Exported 2025-04-21

270414

CANCELLED NOS:
600 900 1100
1301 1201 102
103 505

- TAXLOTS 1200 & 1300
- 1. S41°15'33"E 17.53'
- 2. S33°24'27"E 40.93'
- 3. S0°31'31"E 274.7'
- 4. S64°05'13"W 73.42'
- 5. S86°12'09"W 190.15'
- 6. S16°13'39"W 37.97'
- 7. S34°12'23"E 35.69'
- 8. S27°57'59"E 74.45'
- 9. S19°26'35"E 8.72'
- 10. S47°55'50"E 3.73'
- 11. S65°39'20"E 32.73'
- 12. S41°59'10"E 12.74'
- 13. S48°34'04"E 23.36'
- 14. S44°48'26"E 32.77'
- 15. S57°08'14"E 11'
- 16. S62°42'53"E 32.7'
- 17. S59°10'40"E 84.68'
- 18. S52°30'50"E 55.54'
- 19. P.O.B. BEARS
- N1°13'21"E 778.04'
- FR W1/16 COR COMMON TO SEC'S 14 & 23
- 20. P.O.B BEARS
- N53°11'E 1595.6'
- FR SW COR SEC 14
- 21. S86°42'W 214.8'
- 22. S60°46'W 80'
- 23. S28°36'E 57.3'
- 24. S38°37'E 53.3'
- 25. S76°05'E 126.9'
- 26. S29°18'E 58.3'
- 27. S59°44'E 43.2'
- 28. S52°19'E 59.6'
- 29. N2°28'W 285.3'



270414

Lower Right:
123°7'23"W 43°12'43"N
4222109E 574077N ft