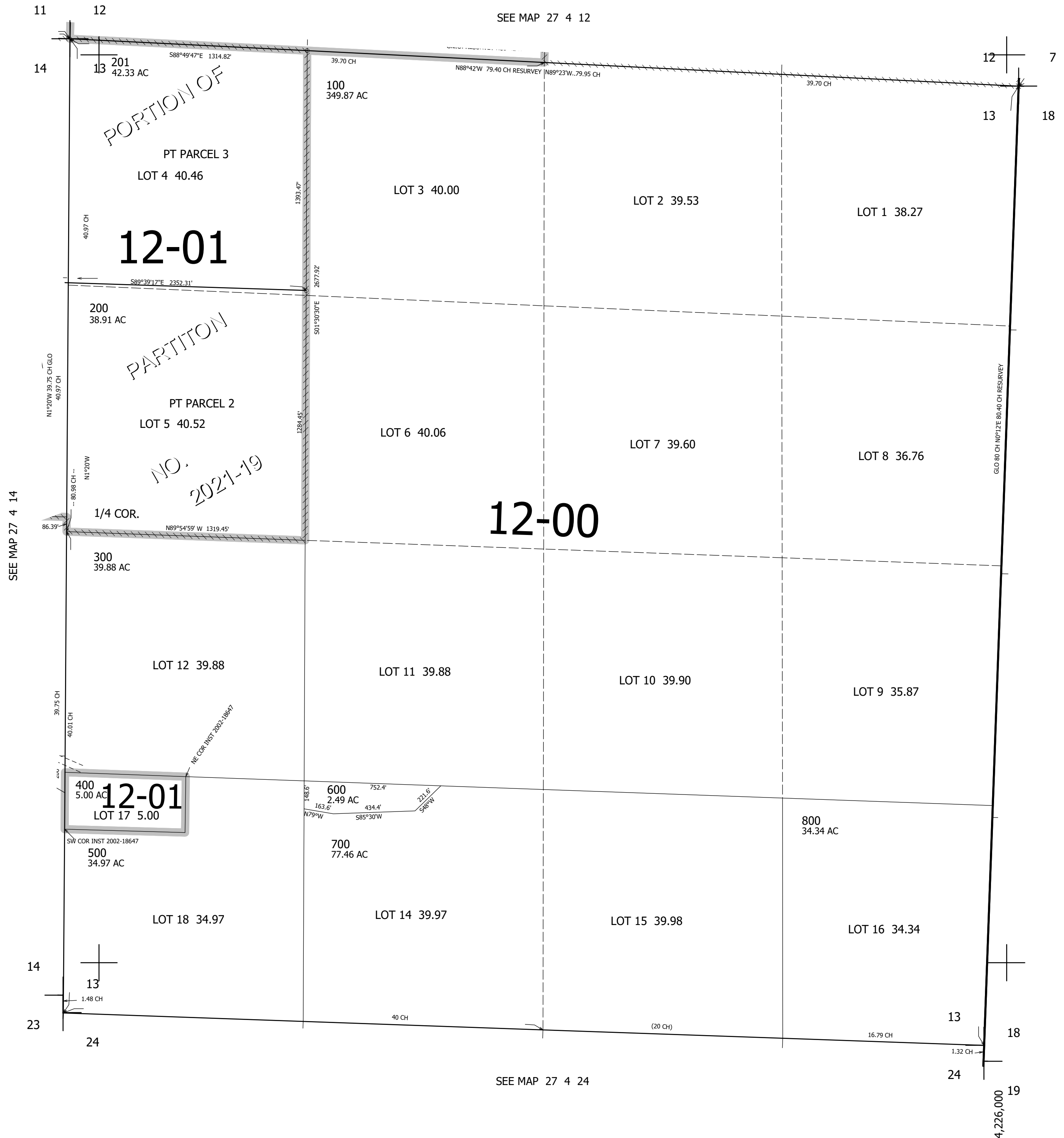


THIS MAP WAS PREPARED FOR ASSESSMENT PURPOSE ONLY.

SEC.13 T.27S. R.4W. W.M. DOUGLAS COUNTY
1" = 400'

REVISED ON 1-13-22

27 4 13



CANCELLED NO'S

SEE MAP 27 3 18

575,000

SEE MAP 27 4 24

4,226,000

27 4 13