

THIS MAP WAS PREPARED FOR ASSESSMENT PURPOSE ONLY.

Upper Left:
123°8'2"W 43°14'41"N
4219616E 586147N ft

SEC.12 T.27S. R.04W. W.M.
DOUGLAS COUNTY
1" = 400'

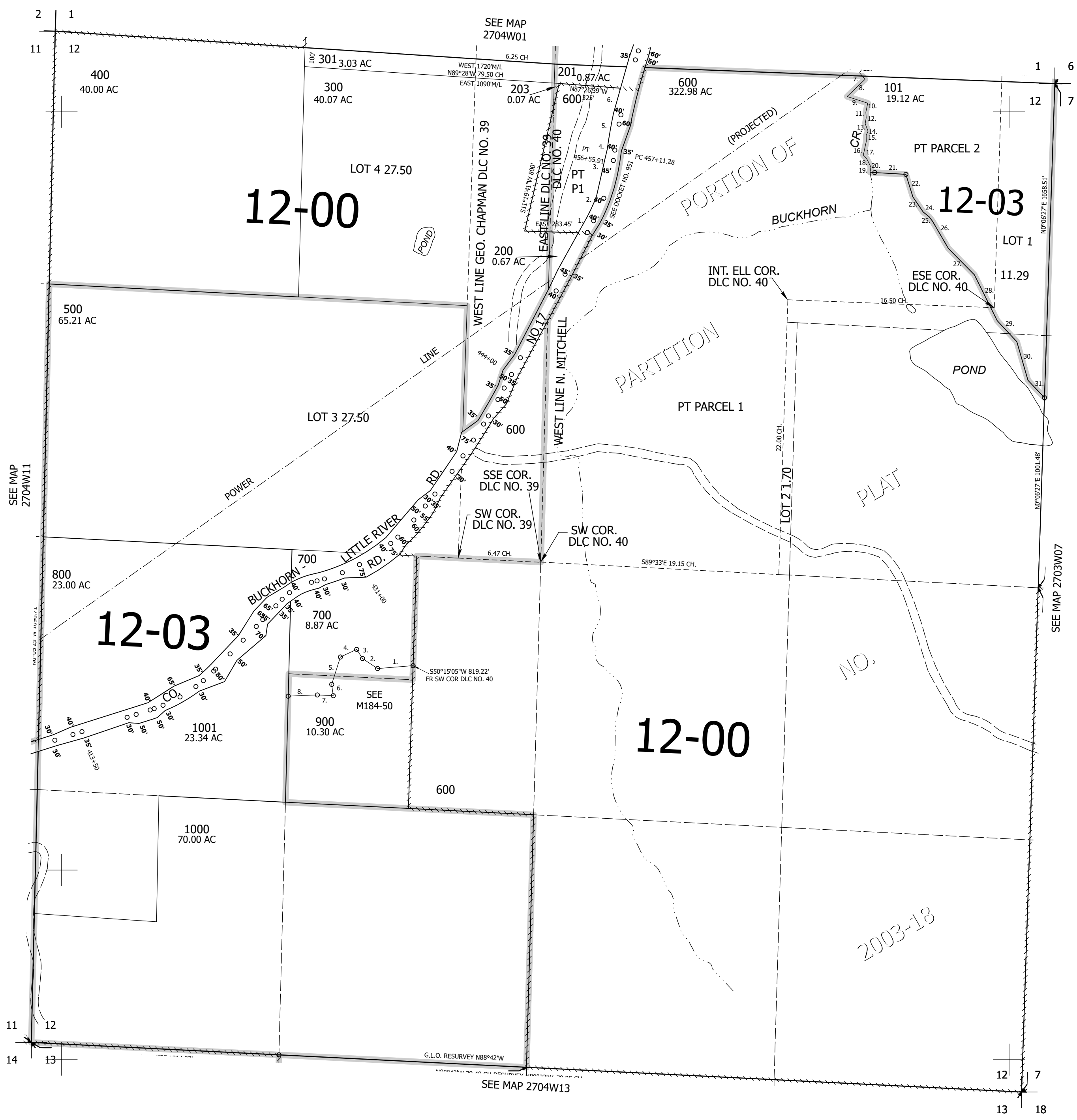
Date Exported 2025-02-13

270412

CANCELLED NOS:
1002 501 202
302 701 901

- PP 2003-18
- N27°11'28"E 94.64'
 - N22°23'54"E 124.79'
 - N10°51'37"E 196.67'
 - N11°22'12"E 55.05'
 - N8°00'43"E 191.27'
 - N13°51'09"E 137.85'
 - S41°24'15"E 44.51'
 - S44°19'17"W 130.7'
 - S73°59'11"E 113.86'
 - S10°01'32"W 48.29'
 - S5°11'59"E 30.11'
 - S7°23'53"W 32.3'
 - S23°40'20"E 41.33'
 - S22°12'28"W 24.83'
 - S2°51'30"E 31.67'
 - S10°25'55"W 73.77'
 - S45°44'07"E 24.82'
 - S28°17'51"E 50.51'
 - S7°30'32"W 27.85'
 - S88°21'46"E 25'
 - S88°21'46"E 164.55'
 - S19°05'50"E 124.58'
 - S36°03'34"E 96.77'
 - S53°01'18"E 39.81'
 - S39°55'24"E 29.13'
 - S31°51'34"E 166.64'
 - S46°29'20"E 195.51'
 - S28°13'56"E 270.14'
 - S44°49'30"E 151.65'
 - S17°49'08"E 212.33'
 - S45°20'17"E 126.39'

- PARCEL 900
- S82°58'49"W 188.07'
 - N58°46'46"W 95.33'
 - N34°57'47"W 57.30'
 - S62°28'26"W 94.72'
 - S15°15'50"W 151.71'
 - S10°14'23"E 60.23'
 - N89°36'47"W 84.09'
 - S85°12'59"W 182.50'



270412

Lower Right:
123°6'13"W 43°13'35"N
4227465E 579192N ft