

THIS MAP WAS PREPARED FOR ASSESSMENT PURPOSE ONLY.

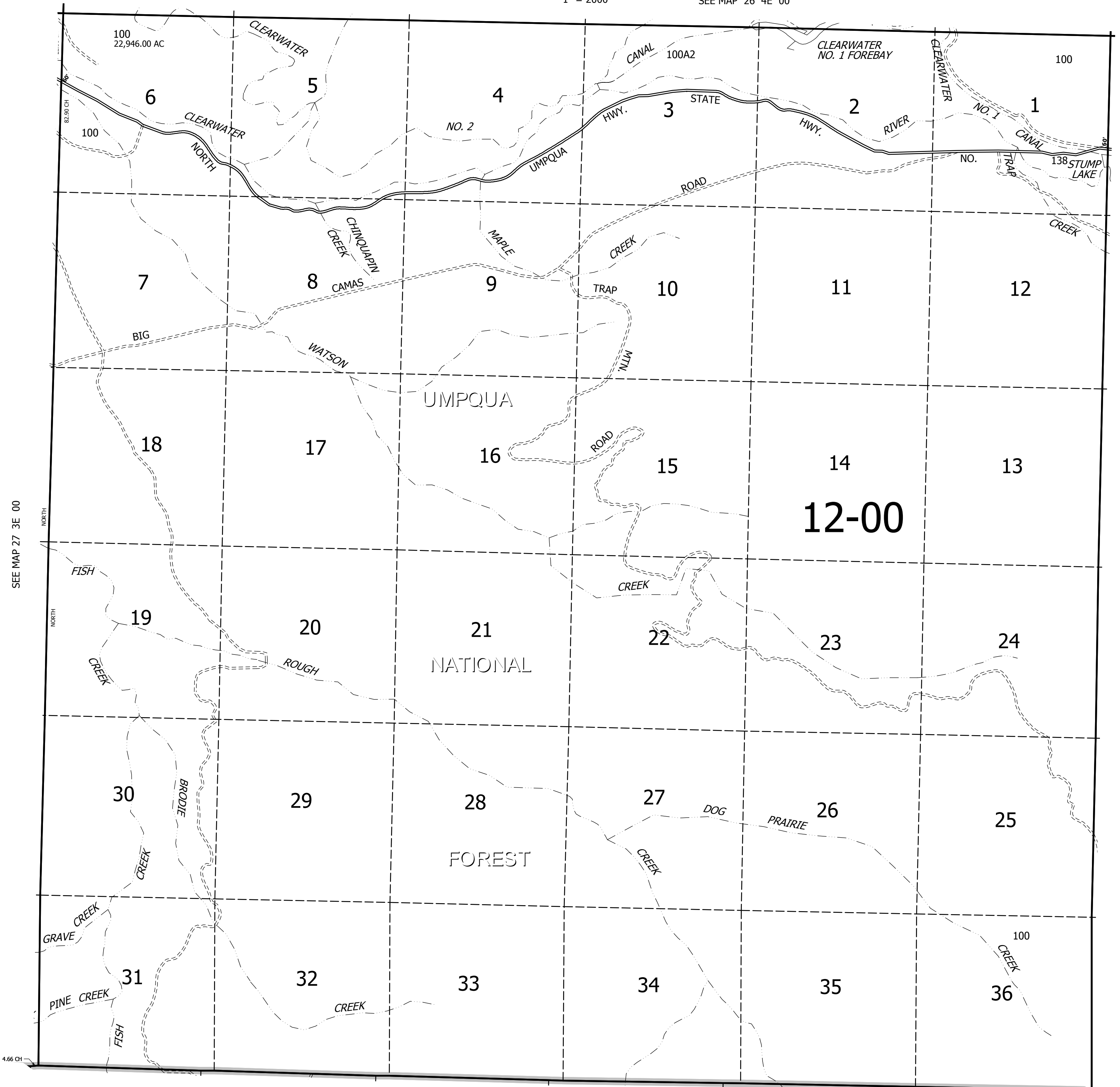
T.27S. R.4E. W.M.
DOUGLAS COUNTY
1" = 2000'

REVISED ON
5-31-12

27 4E 00

SEE MAP 26 4E 00

CANCELLED NO'S
100A1



SEE MAP 27 3E 00

SEE MAP 27 5E 00

SEE MAP 28 4E 00

27 4E 00