

THIS MAP WAS PREPARED FOR ASSESSMENT PURPOSE ONLY.

Upper Left:  
123°2'9"W 43°13'48"N  
4245575E 579982N ft

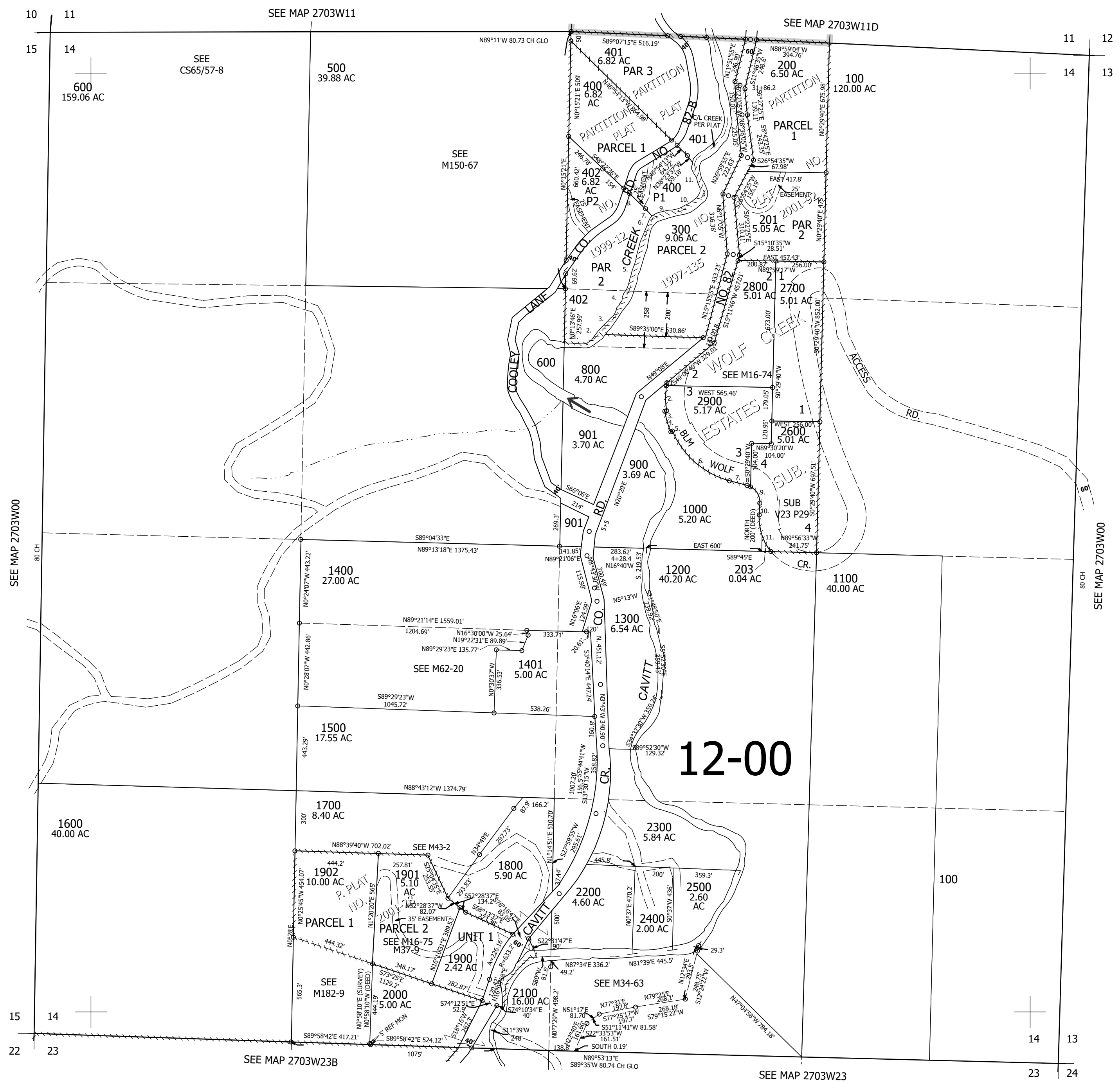
SEC.14 T.27S. R.03W. W.M.  
DOUGLAS COUNTY  
1" = 400'

Date Exported 2024-12-18

270314

CANCELLED NOS:  
700 701 100M1  
1201 101 202  
2001

- WOLF CREEK ESTATES SUB
1. LC=S0°57'01"W 150.40'  
R=459.26' A=151.08'
  2. LC=S1°28'26"E 134.25'  
R=459.26' A=134.73'
  3. S79°57'18"W 10.00'
  4. LC=S17°02'27"E 114.43'  
R=469.26' A=114.71'
  5. N65°49'29"E 10.00'
  6. LC=S49°50'13"E 402.97'  
R=459.26' A=417.17'
  7. S76°26'34"E 95.74'
  8. LC=S69°22'44"E 20.95'  
R=93.26' A=20.94'
  9. LC=S30°34'46"E 99.84'  
R=93.26' A=105.36'
  10. S2°07'37"W 62.82'
  11. LC=S18°46'17"E 207.63'  
R=288.73' A=212.39'
- PP 1999-12
1. N89°35'32"W 162.56'
  2. N42°36'03"W 78.54'
  3. N42°36'03"W 79.15'
  4. N27°08'49"E 158.07'
  5. N15°28'58"E 319.25'
  6. N22°30'59"E 91.1'
  7. N43°25'17"W 60.71'
  8. N48°22'36"W 110.74'
  9. N76°02'43"E 156.22'
  10. N55°03'28"E 149.9'
  11. N20°39'39"W 172.19'



270314

Lower Right:  
123°0'20"W 43°12'42"N  
4253424E 573027N ft