

THIS MAP WAS PREPARED FOR ASSESSMENT PURPOSE ONLY.

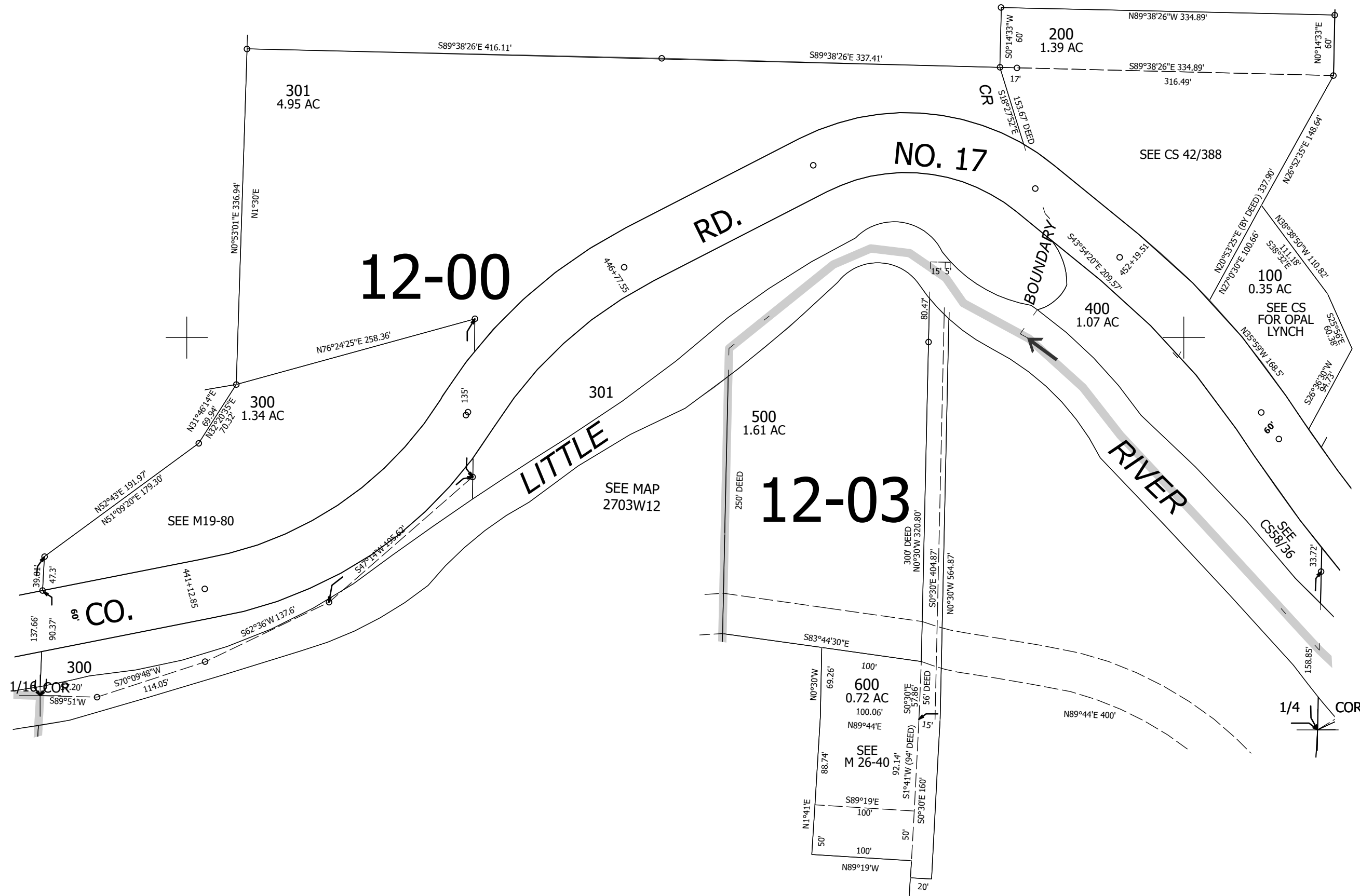
Upper Left:
122°59'49"W 43°14'19"N
4256016E 582756N ft

SE1/4 NE1/4 SEC.12 T.27S. R.03W. W.M.
DOUGLAS COUNTY
1" = 100'

Date Exported 2025-04-14

270312AD

CANCELLED NOS:



270312AD

Lower Right:
122°59'22"W 43°14'2"N
4257991E 581017N ft