

THIS MAP WAS PREPARED FOR ASSESSMENT PURPOSE ONLY.

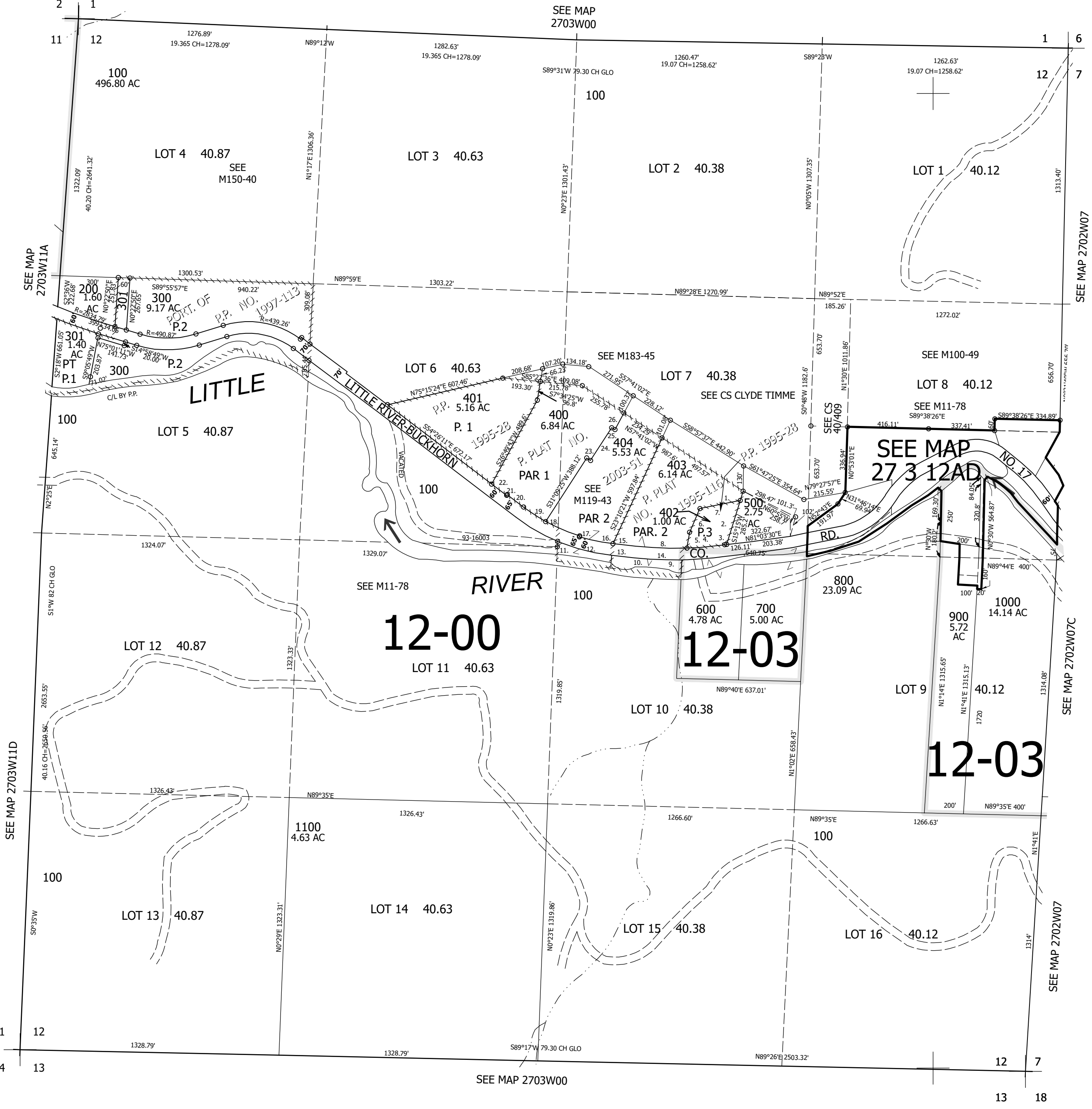
Upper Left:
123°0'57"W 43°14'41"N
4251073E 585183N ft

SEC.12 T.27S. R.03W. W.M.
DOUGLAS COUNTY
1" = 400'

Date Exported 2025-04-14

CANCELLED NOS:
101 102 103
104 105 106

- PP 1995-28 & 116
- 1. S15°29'52"W 50.3'
- 2. S15°29'52"W 236.14'
- 3. S80°27'23"W 10.27'
- 4. LC=583°24'41"W 193.82'
- A=193.91
- 5. N8°13'E 81.86'
- 6. N21°38'06"E 132.77'
- 7. N77°02'31"E 211.01'
- 8. LC=589°37'33"E 262.77'
- A=262.99
- 9. N0°42'E 88.53'
- 10. S84°27'43"E 642.53'
- 11. S0°22'39"W 102.39'
- 12. LC=N77°13'36"W 287.47'
- A=288.5'
- 13. N85°37'05"W 117.11'
- 14. LC=N89°12'24"W 242.85'
- A=243.01
- 15. N85°37'05"W 117.11'
- 16. LC=N80°08'07"W 176.75'
- A=172.02
- 17. N1°5'20'51"E 5'
- 18. LC=N64°32'40"W 322.9'
- A=324.58'
- 19. N54°26'11"W 105.46'
- 20. S35°33'49"W 5'
- 21. N54°26'11"W 96.49'



Lower Right:
122°59'8"W 43°13'35"N
4258922E 578228N ft