

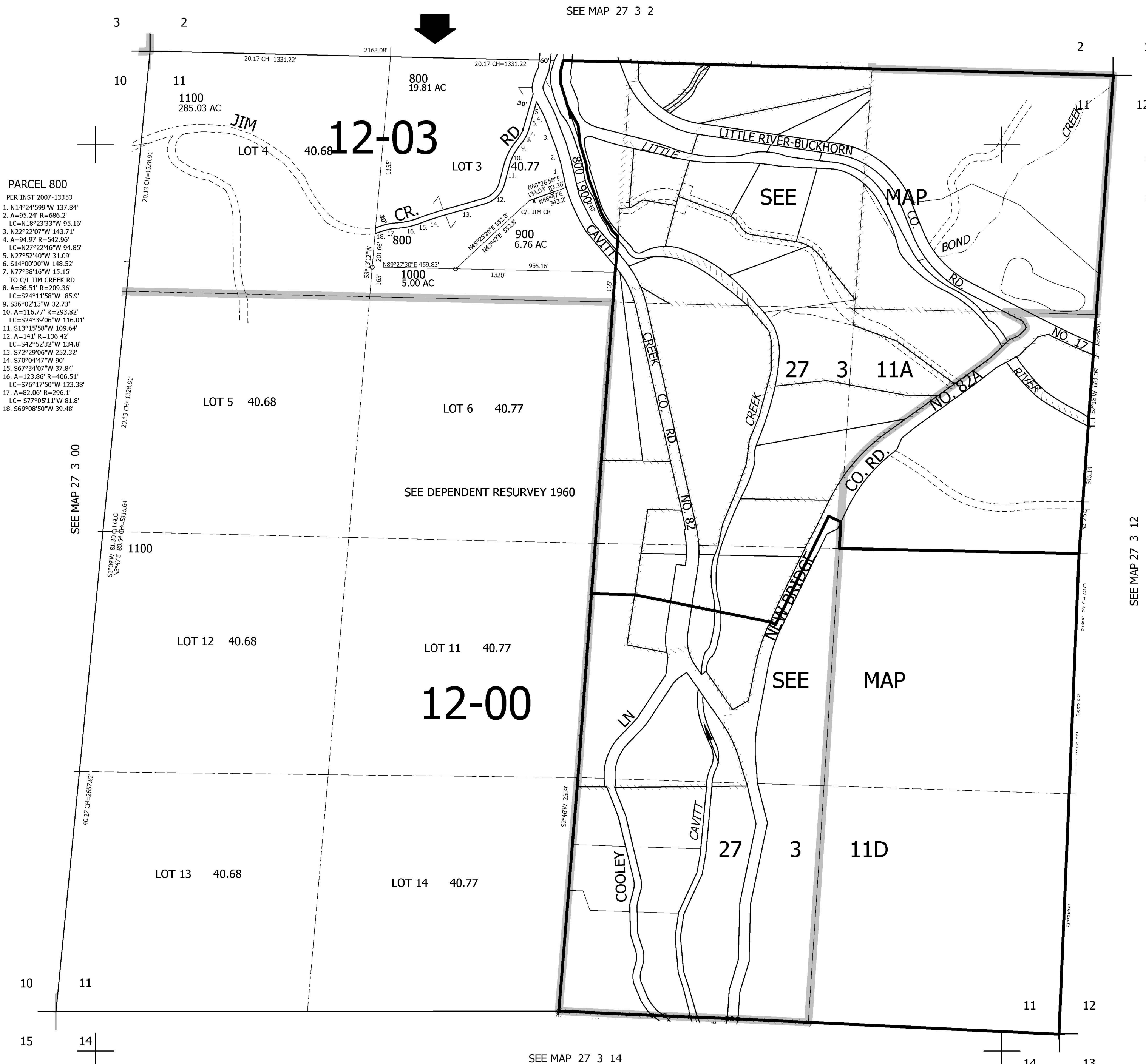
SEC.11 T.27S. R.3W. W.M.
DOUGLAS COUNTY

REVISED ON
8-13-10

27 3 11

THIS MAP WAS PREPARED FOR
ASSESSMENT PURPOSE ONLY.

1" = 400'



PARCEL 800
 PER INST 2007-13353
 1. N14°24'59"W 137.84'
 2. A=95.24' R=686.2'
 LC=N18°23'33"W 95.16'
 3. N22°22'07"W 143.71'
 4. A=94.97' R=542.96'
 LC=N27°22'46"W 94.85'
 5. N27°52'40"W 31.09'
 6. S14°00'00"W 148.52'
 7. N77°38'16"W 15.15'
 TO C/L JIM CREEK RD
 8. A=86.51' R=209.36'
 LC=S24°11'58"W 85.9'
 9. S36°02'13"W 32.73'
 10. A=116.77' R=293.82'
 LC=S24°39'06"W 116.01'
 11. S13°15'58"W 109.64'
 12. A=141' R=136.42'
 LC=S42°52'32"W 134.8'
 13. S72°29'06"W 252.32'
 14. S70°04'47"W 90'
 15. S67°34'07"W 37.84'
 16. A=123.86' R=406.51'
 LC=S76°17'50"W 123.38'
 17. A=82.06' R=296.1'
 LC= S77°05'11"W 81.8'
 18. S69°08'50"W 39.48'

CANCELLED NO'S
100 THRU 700
1200 THRU 2301
801

SEE MAP 27 3 00

SEE MAP 27 3 2

SEE MAP 27 3 12

SEE MAP 27 3 14

4,252,000

579,000

27 3 11