

THIS MAP WAS PREPARED FOR ASSESSMENT PURPOSE ONLY.

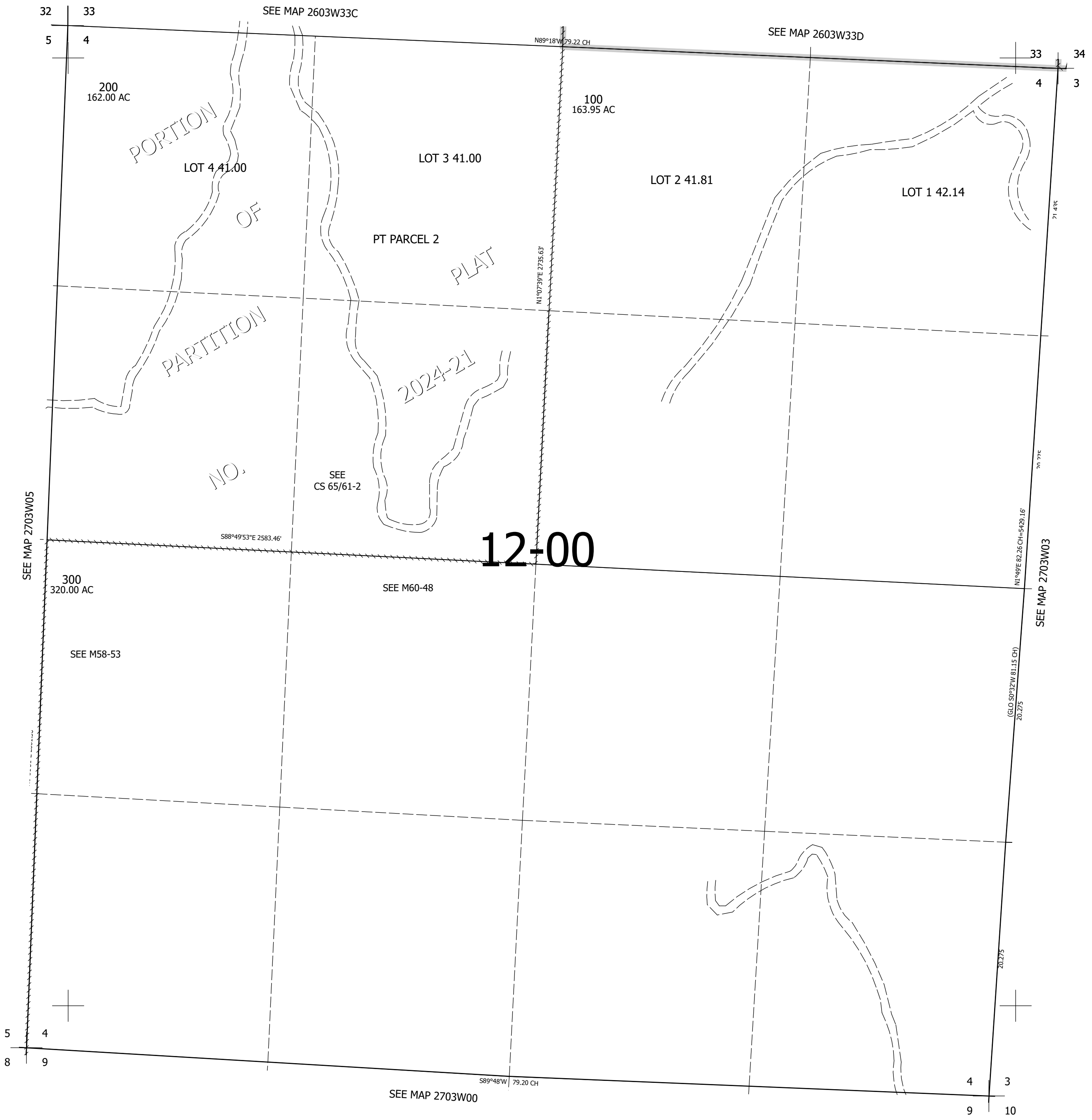
Upper Left:  
123°4'28"W 43°15'32"N  
4235582E 590863N ft

SEC.04 T.27S. R.03W. W.M.  
DOUGLAS COUNTY  
1" = 400'

Date Exported 2024-07-09

270304

CANCELLED NOS:



270304

Lower Right:  
123°2'40"W 43°14'26"N  
4243431E 583908N ft