

THIS MAP WAS PREPARED FOR ASSESSMENT PURPOSE ONLY.

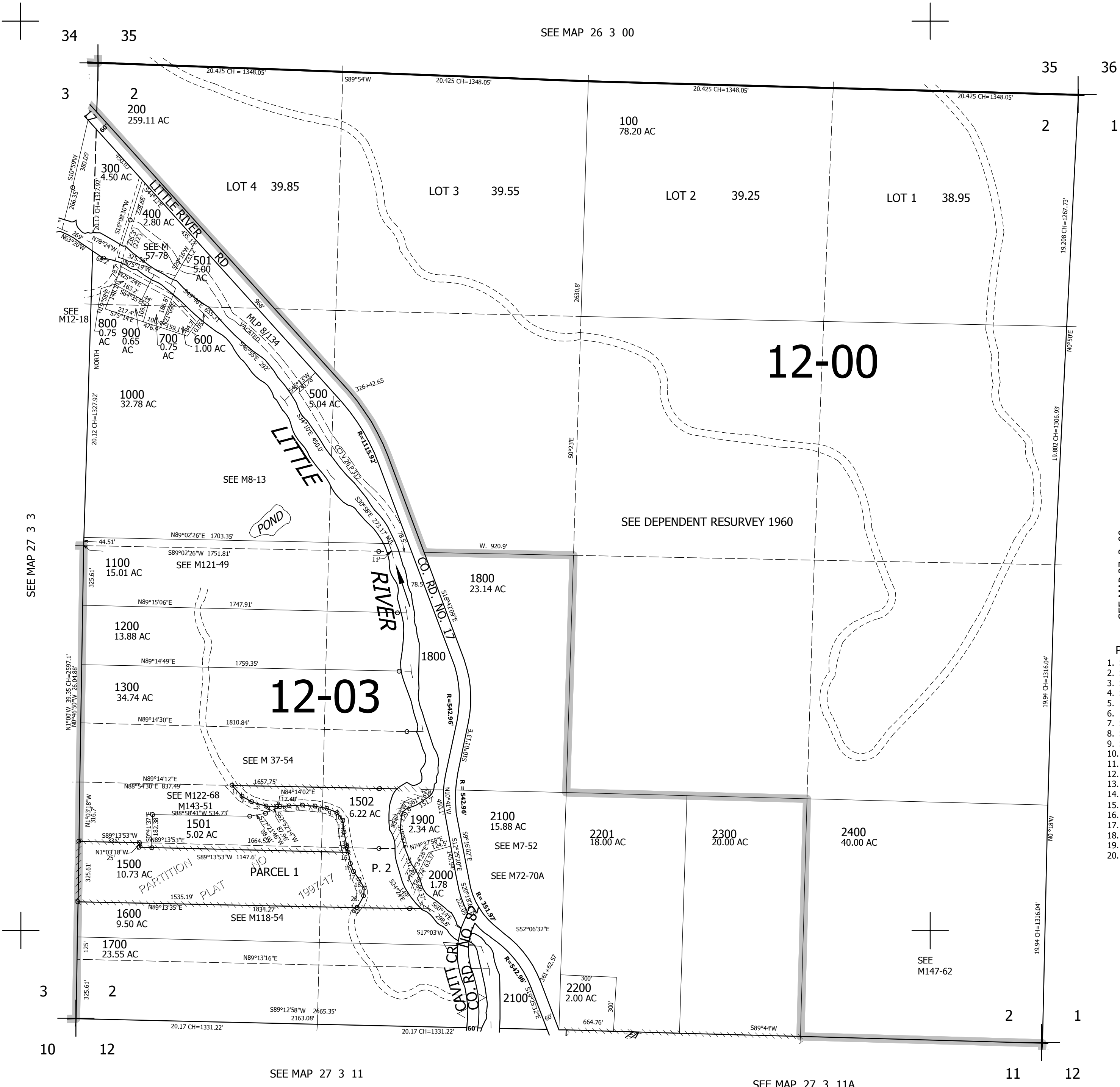
SEC.2 T.27S. R.3W. W.M.
DOUGLAS COUNTY

1" = 400'

REVISED ON
7-8-19

27 3 2

SEE MAP 26 3 00



CANCELLED NO'S
1001 1400 2201M1
2300M1 1503 1002

SEE MAP 27 3 00

- PARCEL 1502
- S45°46'21"E 73.97'
 - S62°19'37"E 62.13'
 - S75°32'08"E 81.5'
 - S89°01'02"E 58.86'
 - N84°14'02"E 67.88'
 - N84°44'17"E 74.55'
 - S87°19'04"E 69'
 - S81°28'47"E 65.88'
 - S69°31'29"E 61.67'
 - S37°20'42"E 54.06'
 - S8°01'39"E 64.42'
 - S13°25'32"E 74.77'
 - S13°59'47"E 10.95'
 - S13°59'47"E 25.68'
 - S13°46'44"E 63.75'
 - S22°00'33"E 46.65'
 - S37°36'55"E 52.03'
 - S31°56'34"E 56.19'
 - S2°41'22"W 43.61'
 - S27°11'07"W 69.31'

585,000

4,252,000

27 3 2

SEE MAP 27 3 3

SEE MAP 27 3 11

SEE MAP 27 3 11A