

THIS MAP WAS PREPARED FOR ASSESSMENT PURPOSE ONLY.

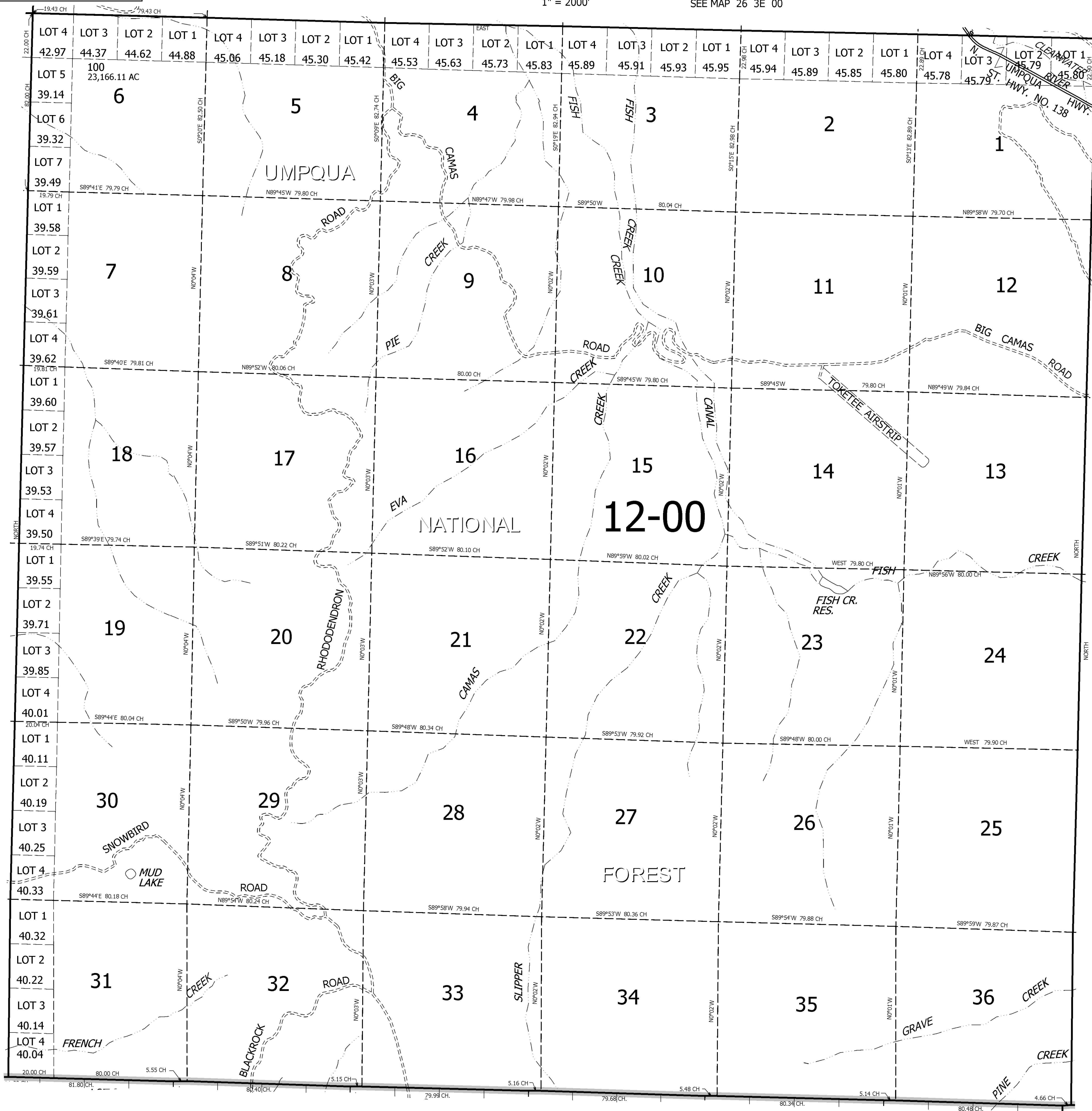
# T.27S. R.3E. W.M. DOUGLAS COUNTY

REVISED ON

27 3E 00

1" = 2000'

SEE MAP 26 3E 00



SEE MAP 27 2E 00

SEE MAP 27 4E 00

SEE MAP 28 3E 00

27 3E 00