

THIS MAP WAS PREPARED FOR ASSESSMENT PURPOSE ONLY.

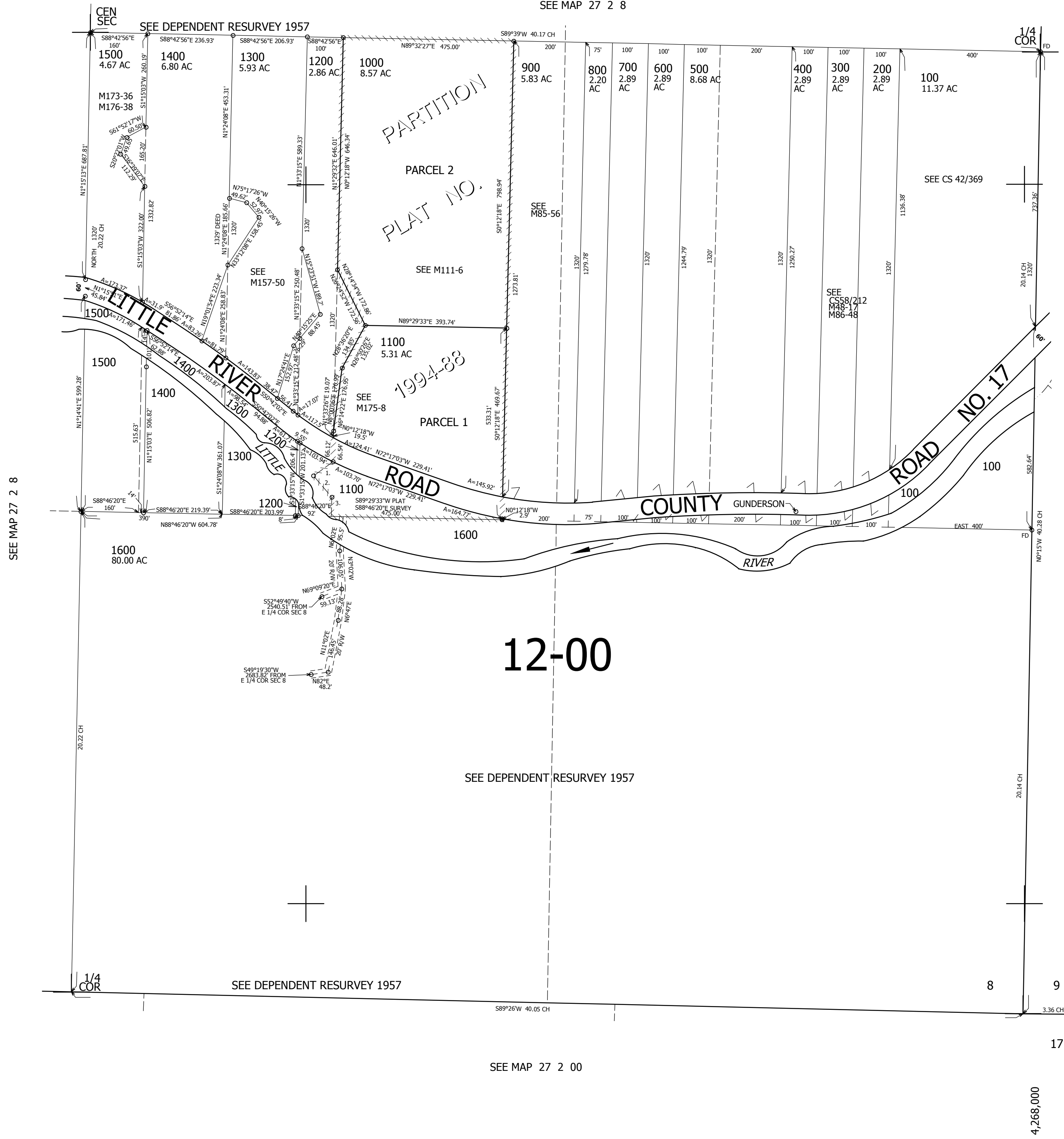
SE1/4 SEC.8 T.27S. R.2W. W.M.
DOUGLAS COUNTY

REVISED ON
1-9-20

27 2 8D

1" = 200'

SEE MAP 27 2 8



CANCELLED NO'S
1101 1201 1001
1102 1600A1 1202
1301 1302 1401
1203 1402 1501

PARCEL 1100
1. N52°33'59"E 65.98' (PLAT)
N54°55'09"E 63.92' (SURVEY)
2. N42°14'04"W 78.47' (PLAT)
N40°03'45"W 79.1' (SURVEY)
3. N0°12'18"W 53.4' (PLAT)
N2°00'03"E 53.62' (SURVEY)

SEE MAP 27 2 8

SEE MAP 27 2 00

12-00

SEE DEPENDENT RESURVEY 1957

579,000

1/4 COR

SEE DEPENDENT RESURVEY 1957

8

9

SEE MAP 27 2 00

17

16

4,268,000

27 2 8D