

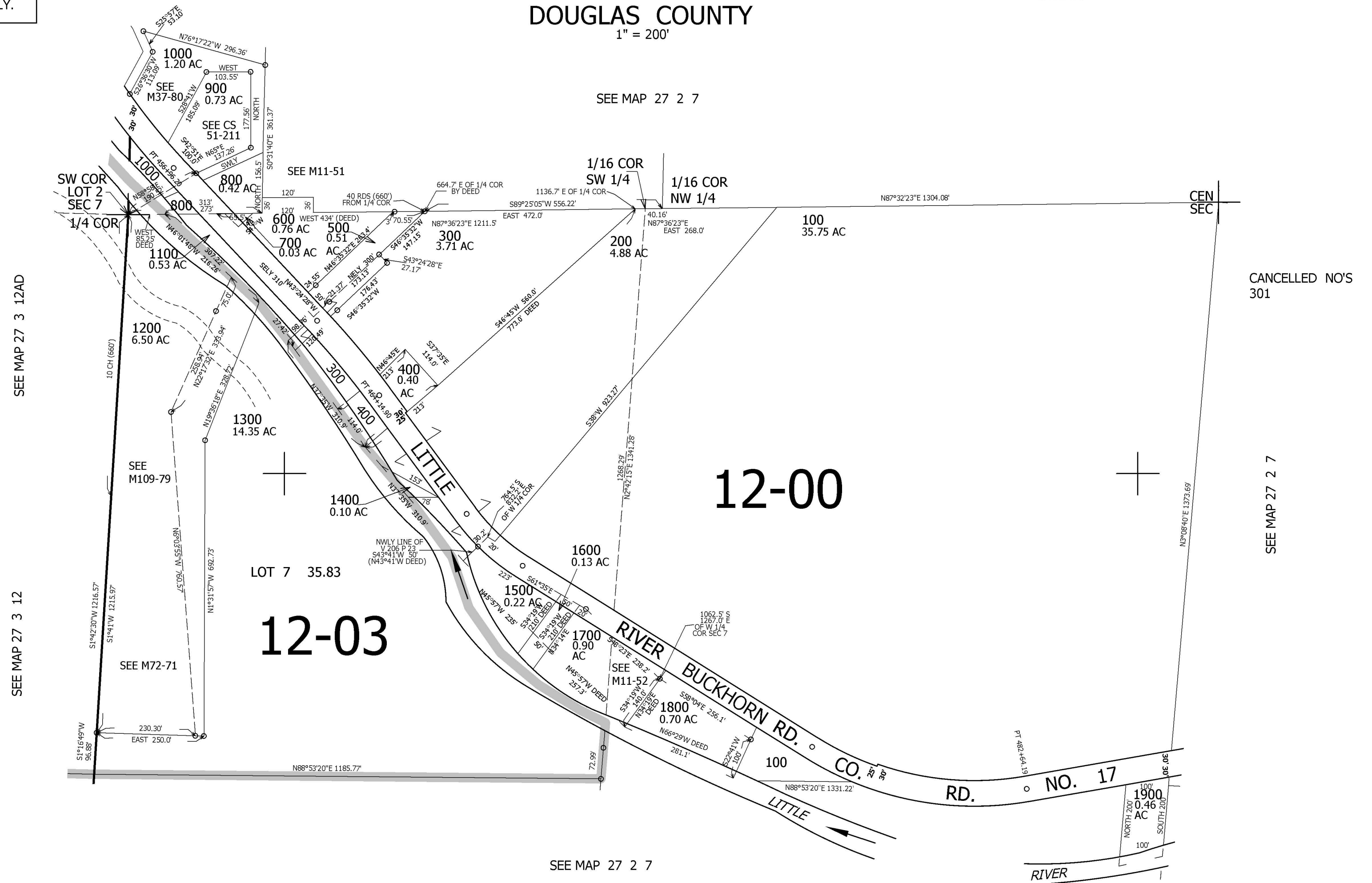
THIS MAP WAS PREPARED FOR ASSESSMENT PURPOSE ONLY.

# SW1/4 SEC.7 T.27S. R.2W. W.M. DOUGLAS COUNTY

1" = 200'

REVISED ON 8-30-10

27 2 7C



12 7  
 13 18

1/4 COR  
 4,260,000

579,000

27 2 7C