

THIS MAP WAS PREPARED FOR ASSESSMENT PURPOSE ONLY.

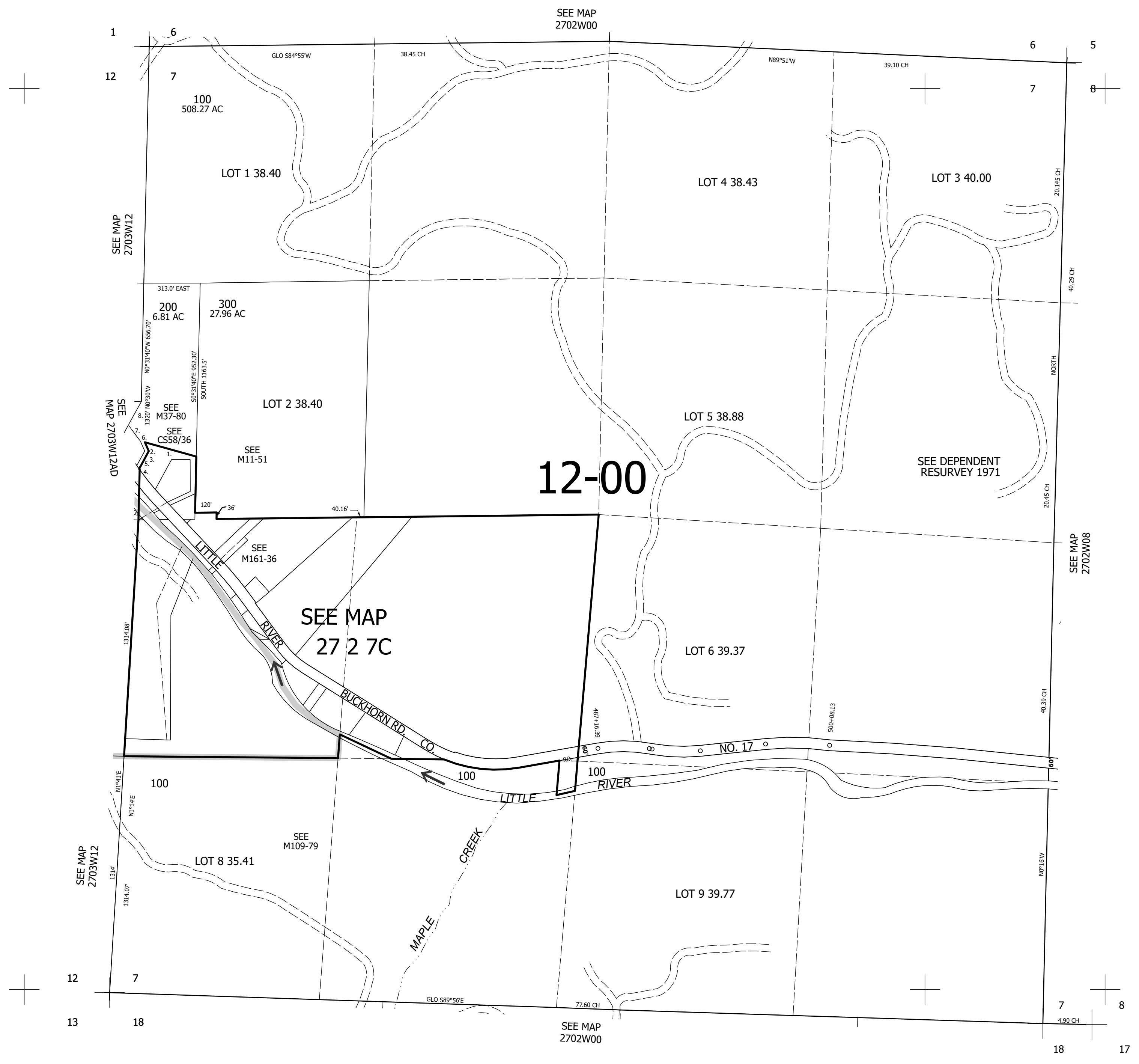
Upper Left:  
122°59'47"W 43°14'41"N  
4256246E 585015N ft

SEC.07 T.27S. R.02W. W.M.  
DOUGLAS COUNTY  
1" = 400'

Date Exported 2023-08-17

CANCELLED NOS:  
100A1

- PARCEL 200
1. N76°17'22"W 296.36'
  2. S25°57'E 53.1'
  3. S26°36'30"W 113.09'
  4. N41°24'55"W 21.57'
  5. N26°36'30"E 94.73'
  6. N25°57'W 60.36'
  7. N38°38'50"W 110.82'
  8. N26°52'35"E 148.64'



Lower Right:  
122°57'58"W 43°13'35"N  
4264095E 578060N ft