

THIS MAP WAS PREPARED FOR ASSESSMENT PURPOSE ONLY.

T.26S. R.9W. W.M. DOUGLAS COUNTY

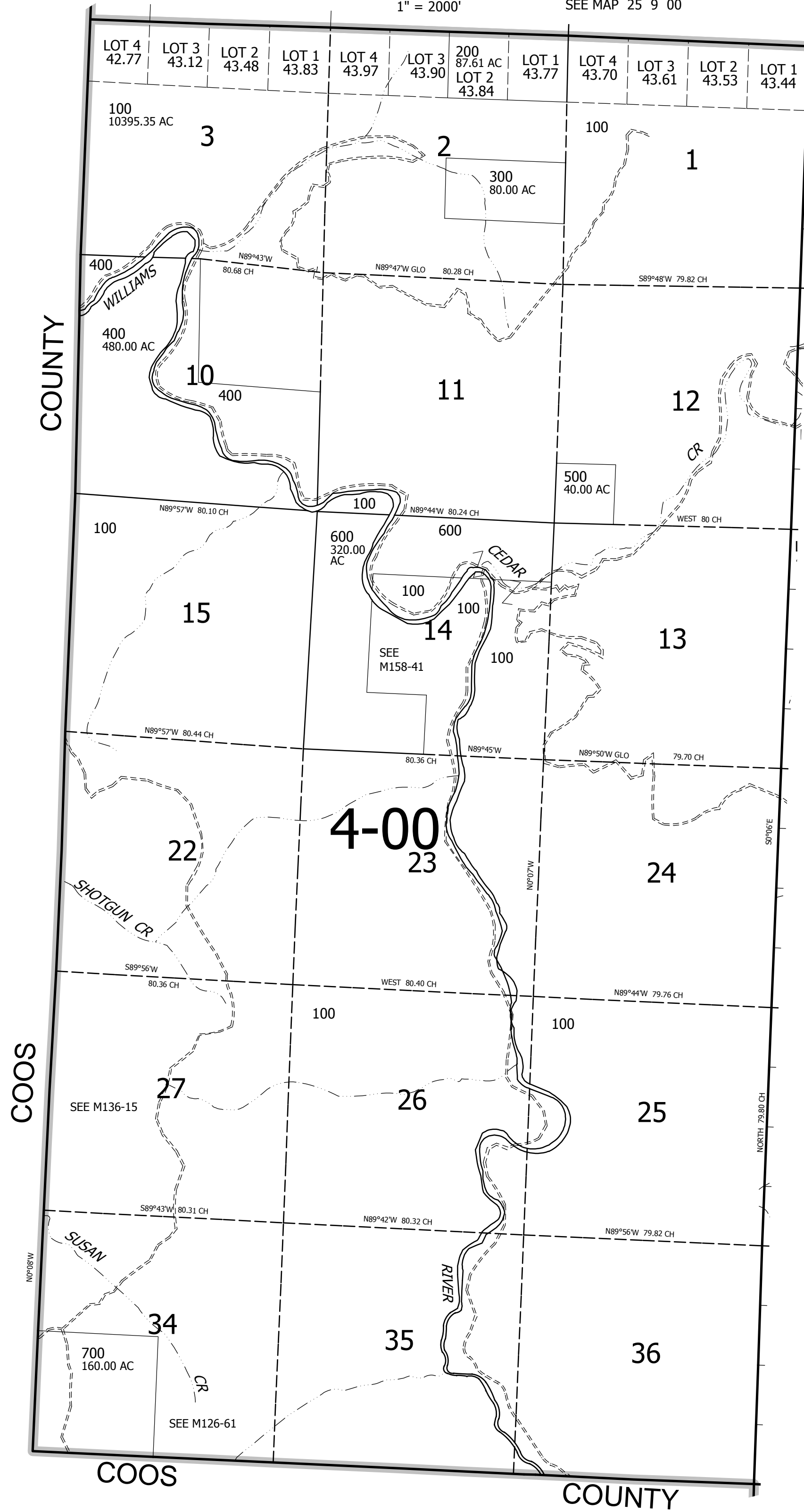
1" = 2000'

SEE MAP 25 9 00

REVISED ON

26 9 00

CANCELLED NO'S



SEE MAP 26 8 00

4,071,000

598,000

26 9 00