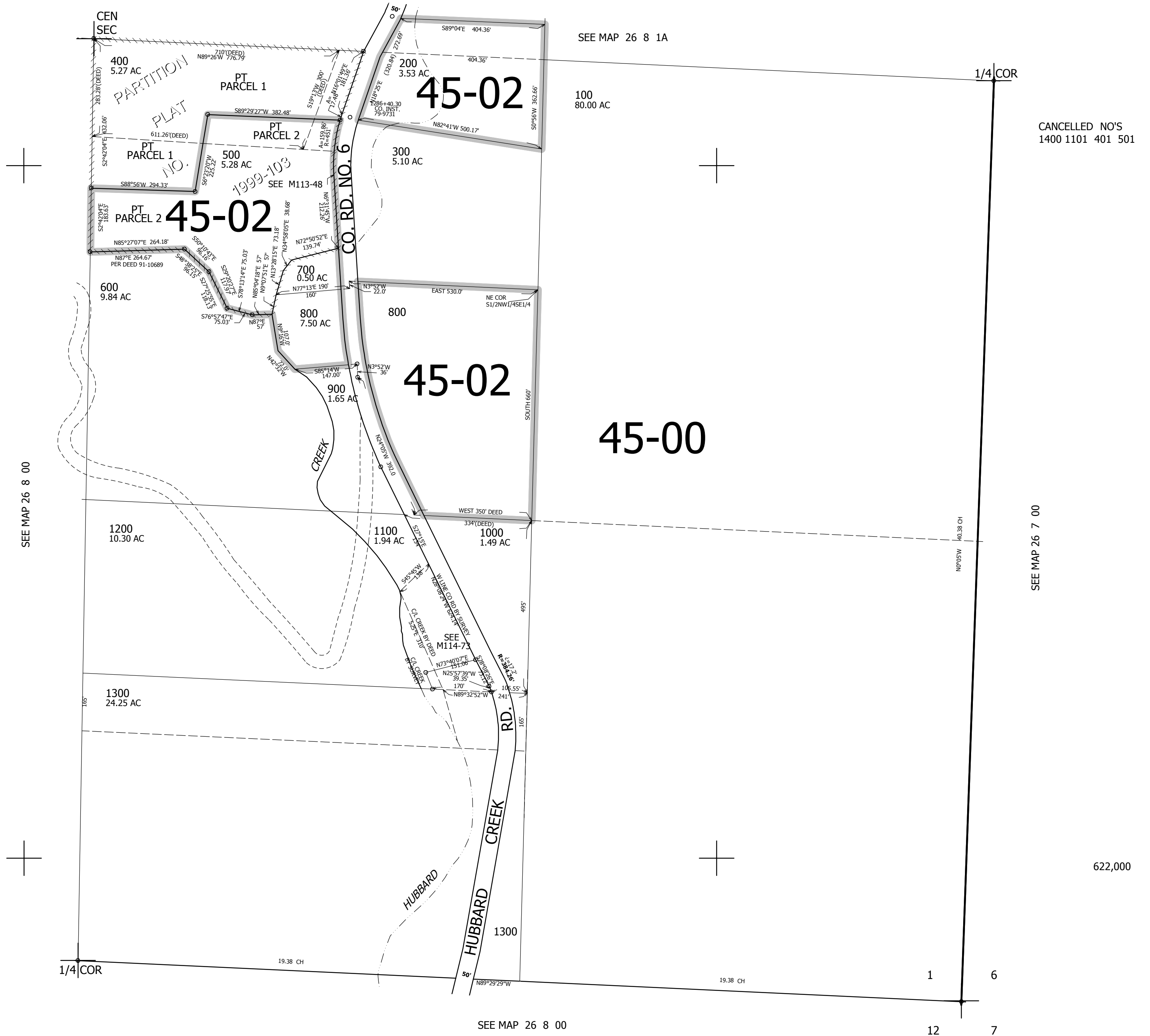


THIS MAP WAS PREPARED FOR ASSESSMENT PURPOSE ONLY.

SE1/4 SEC.1 T.26S. R.8W. W.M.
DOUGLAS COUNTY
1" = 200'

REVISED ON
1-9-19

26 8 1D



CANCELLED NO'S
1400 1101 401 501

622,000

SEE MAP 26 8 00

SEE MAP 26 7 00

SEE MAP 26 8 00

4,100,000

26 8 1D