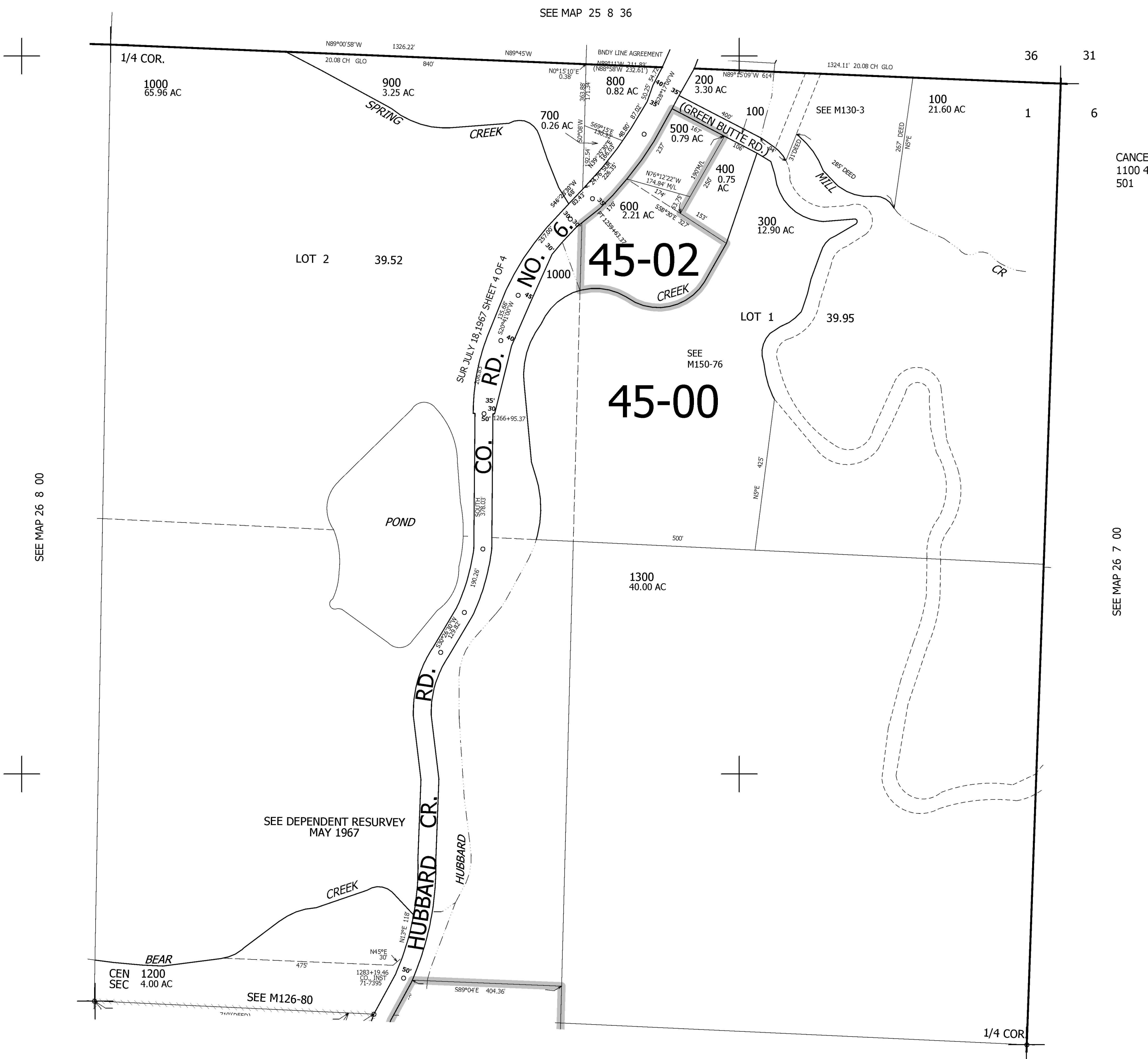


THIS MAP WAS PREPARED FOR ASSESSMENT PURPOSE ONLY.

NE1/4 SEC.1 T.26S. R.8W. W.M.
DOUGLAS COUNTY
1" = 200'

REVISED ON
11-20-08

26 8 1A



CANCELLED NO'S
1100 400M1 1001
501

SEE MAP 26 8 00

SEE MAP 26 7 00

625,000

SEE MAP 26 8 1D

4,100,000

26 8 1A