

THIS MAP WAS PREPARED FOR ASSESSMENT PURPOSE ONLY.

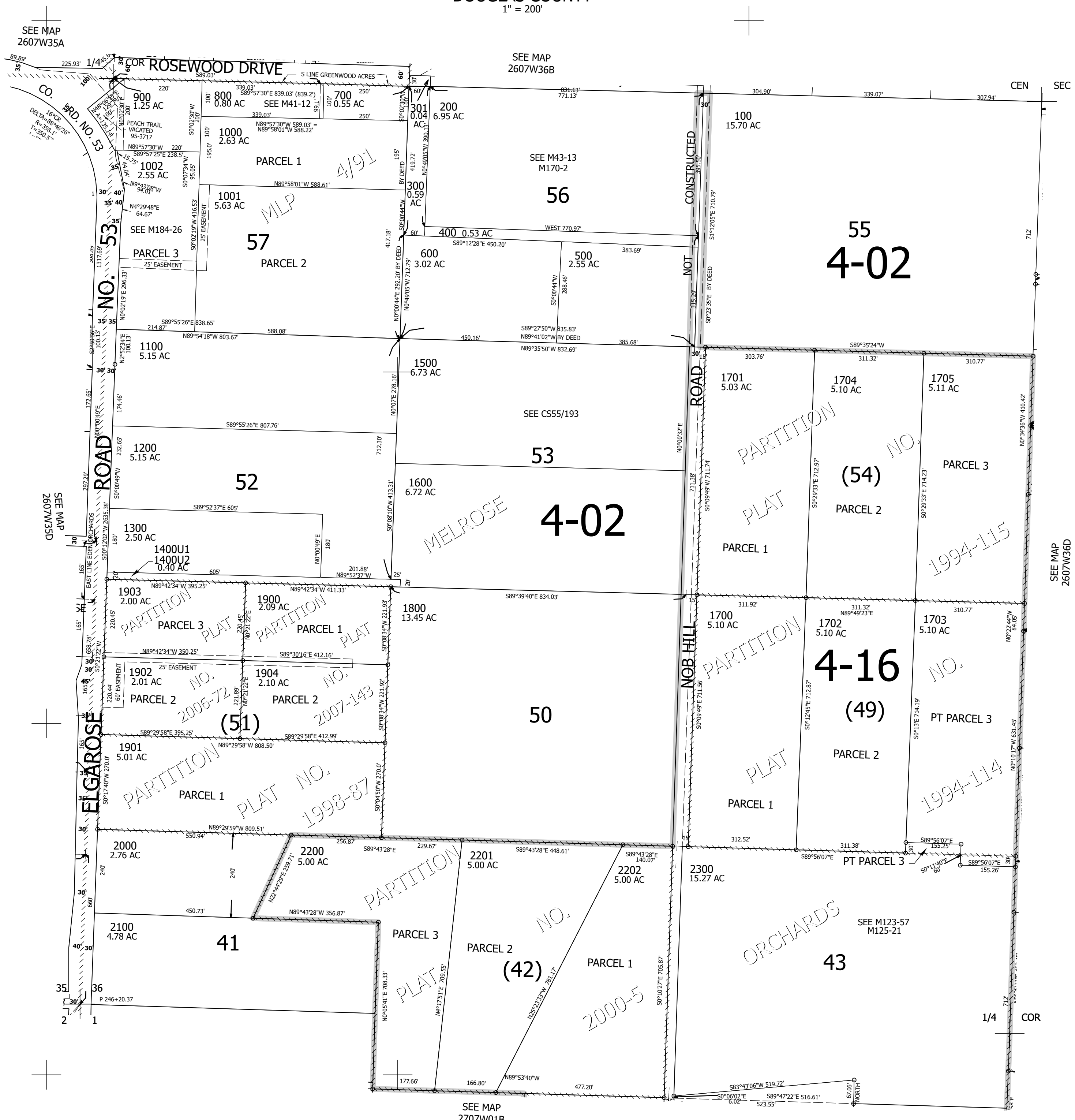
Upper Left:
123°29'20"W 43°15'59"N
4125398E 597202N ft

SW1/4 SEC.36 T.26S. R.07W. W.M.
DOUGLAS COUNTY
1" = 200'

Date Exported 2026-03-12

260736C

CANCELLED NOS:
2301 2302 1706
1700M1 1701M1 1702M1
1703M1 1704M1 1705M1
2300M1 2001 701



SEE MAP
2607W35A

SEE MAP
2607W36B

CEN
SEC

SEE MAP
2607W35D

SEE MAP
2607W36D

SEE MAP
2707W01B

260736C

Lower Right:
123°28'25"W 43°15'25"N
4129324E 593602N ft