

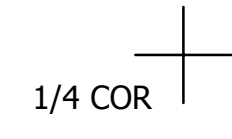
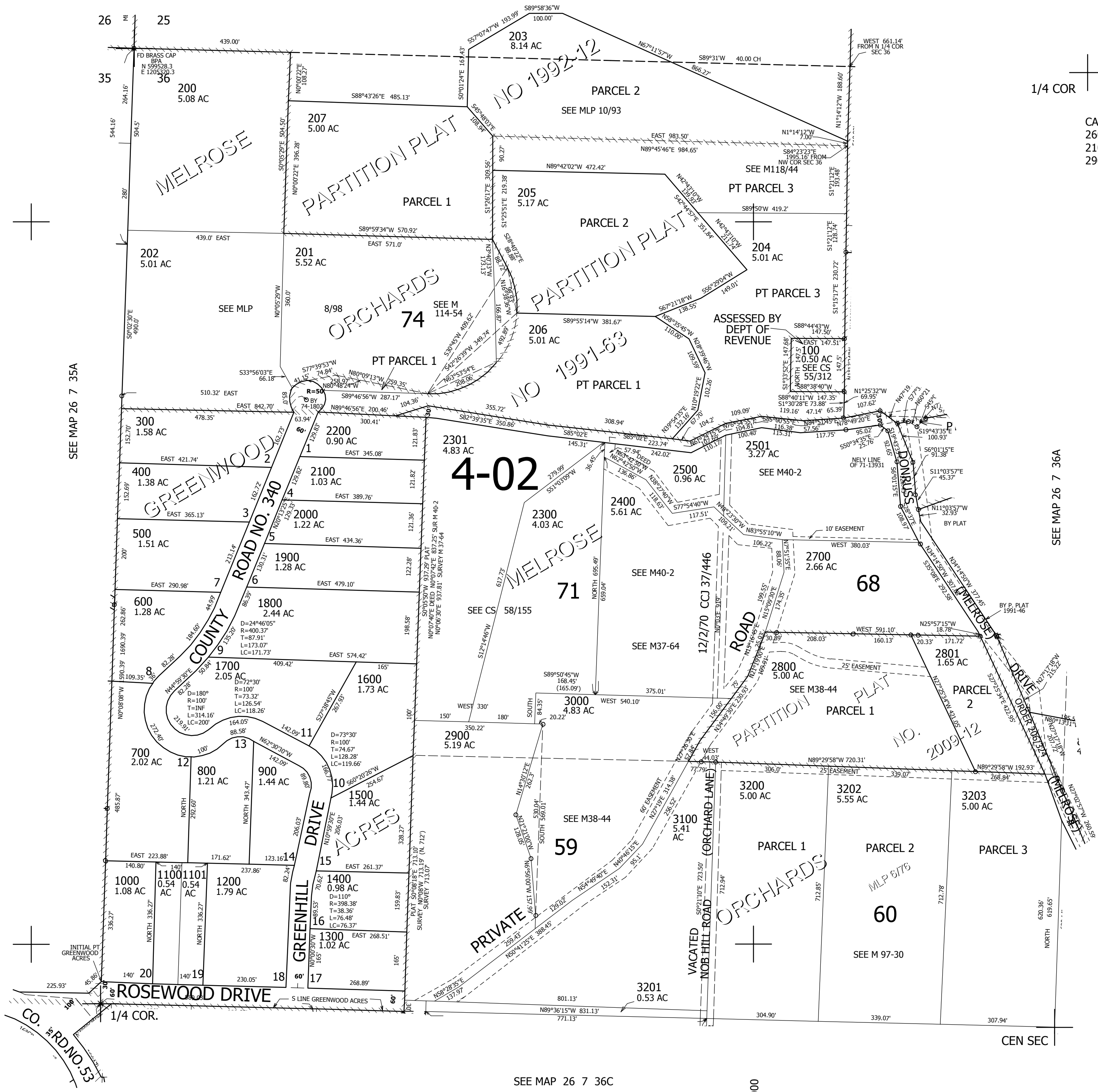
THIS MAP WAS PREPARED FOR ASSESSMENT PURPOSE ONLY.

NW1/4 SEC.36 T.26S. R.7W. W.M.
DOUGLAS COUNTY

REVISED ON
5-4-15

26 7 36B

1" = 200'
SEE MAP 26 7 25C



CANCELLED NO'S
2600 208 209
210 211 212
2901

SEE MAP 26 7 35A

SEE MAP 26 7 36A

SEE MAP 26 7 36C

26 7 36B