

THIS MAP WAS PREPARED FOR ASSESSMENT PURPOSE ONLY.

SE1/4 SEC.35 T.26S. R.7W. W.M.  
DOUGLAS COUNTY  
1" = 200'

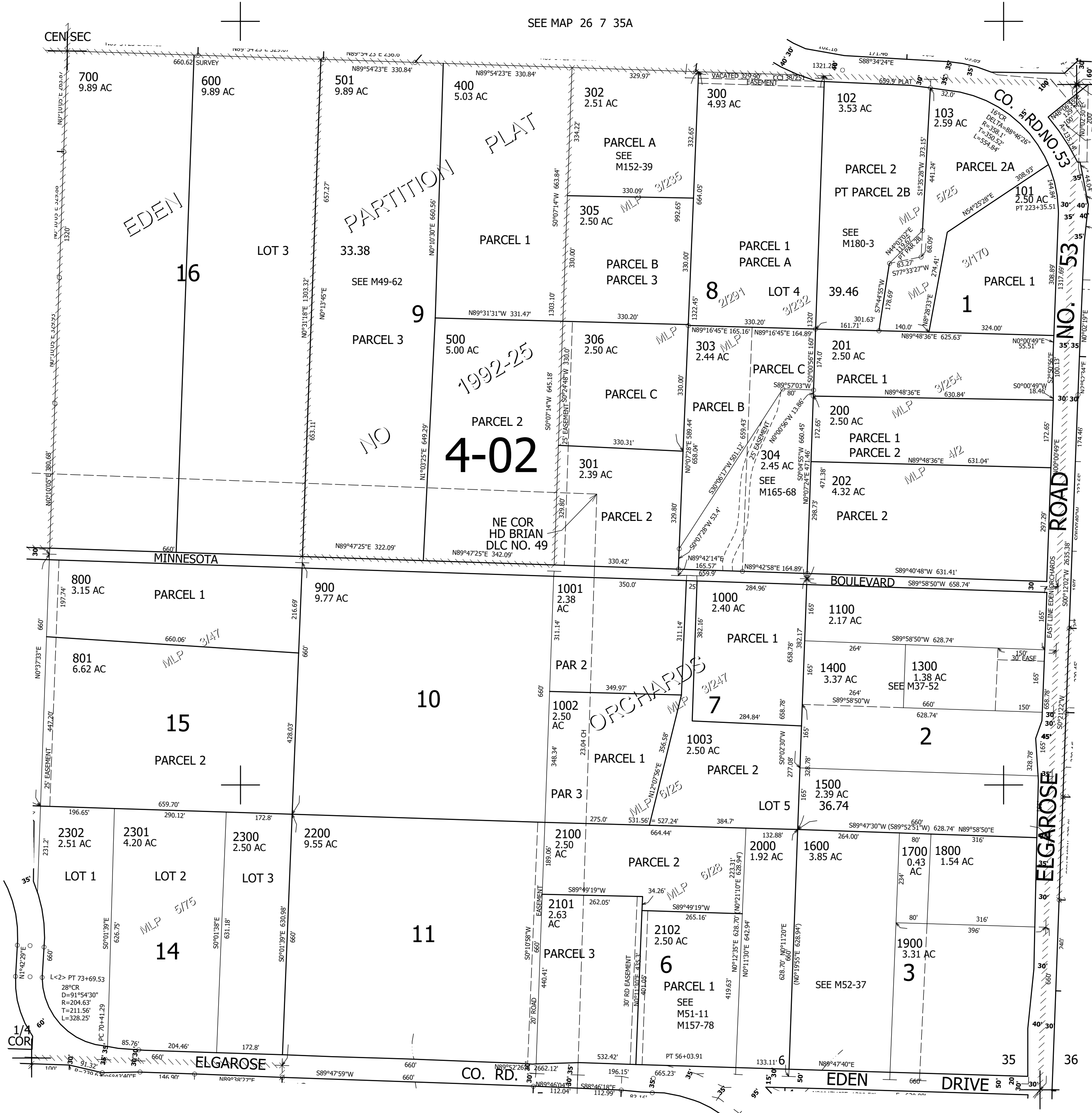
REVISED ON  
11-16-21

26 7 35D

SEE MAP 26 7 35A

SEE MAP 26 7 35C

SEE MAP 26 7 36C



CANCELLED NO'S  
1200 1200M1 1301  
1301M1 100 1100M1  
1300M1 1400M1 1500M1  
307 308 104

595,000

SEE MAP 27 7 2A

4,126,000

26 7 35D