

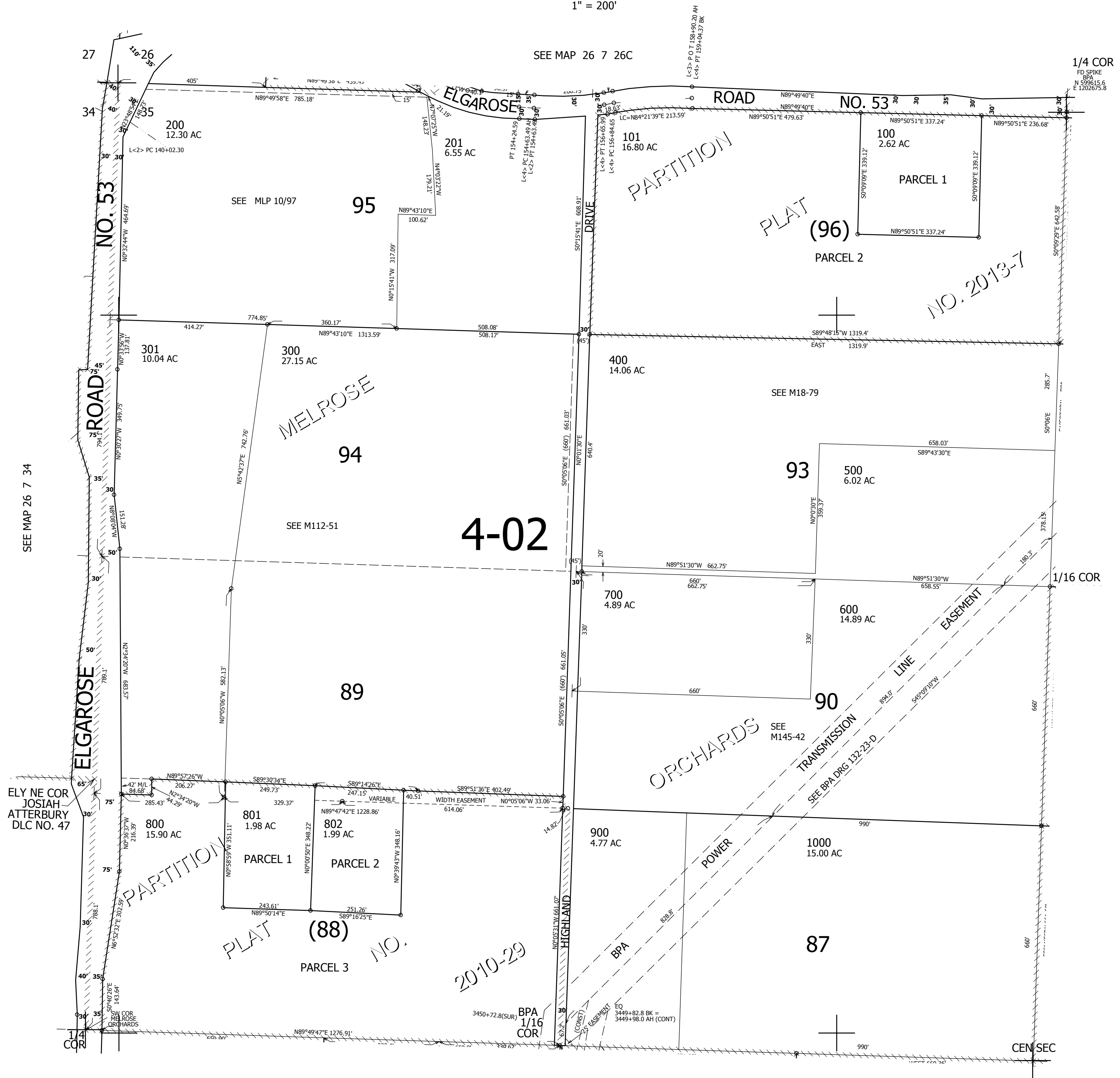
THIS MAP WAS PREPARED FOR ASSESSMENT PURPOSE ONLY.

NW1/4 SEC.35 T.26S. R.7W. W.M.
DOUGLAS COUNTY

REVISED ON
3-12-13

26 7 35B

1" = 200'



CANCELLED NO'S
299 302 303

SEE MAP 26 7 34

SEE MAP 26 7 35A

SEE MAP 26 7 35C

4,123,000

597,000

26 7 35B