

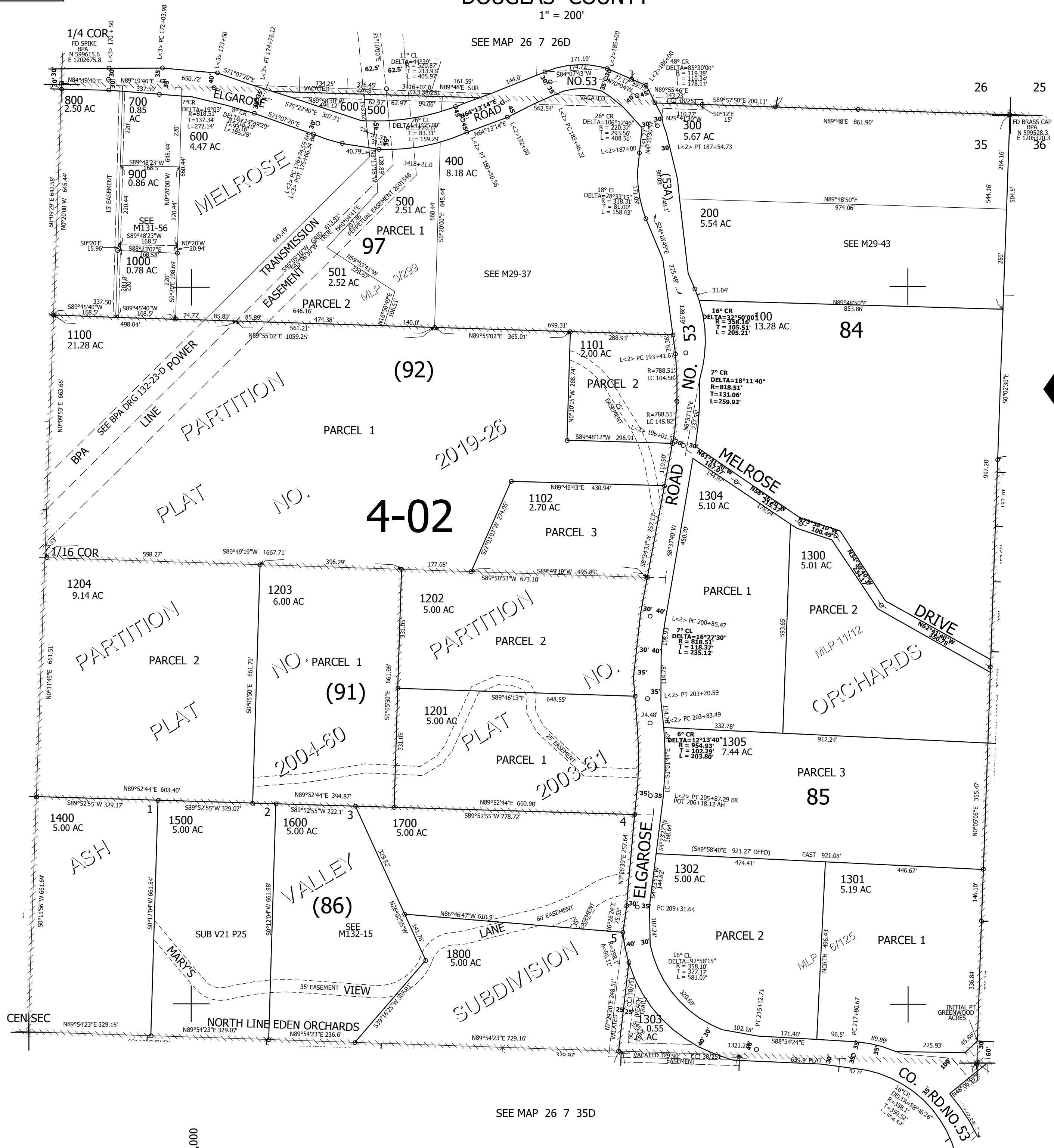
THIS MAP WAS PREPARED FOR ASSESSMENT PURPOSE ONLY.

NE1/4 SEC.35 T.26S. R.7W. W.M. DOUGLAS COUNTY

REVISED ON 11-4-19

26 7 35A

1" = 200'



CANCELLED NO'S 1001 1200

SEE MAP 26 7 36B

597,000

SEE MAP 26 7 35D

26 7 35A

4,124,000