

THIS MAP WAS PREPARED FOR ASSESSMENT PURPOSE ONLY.

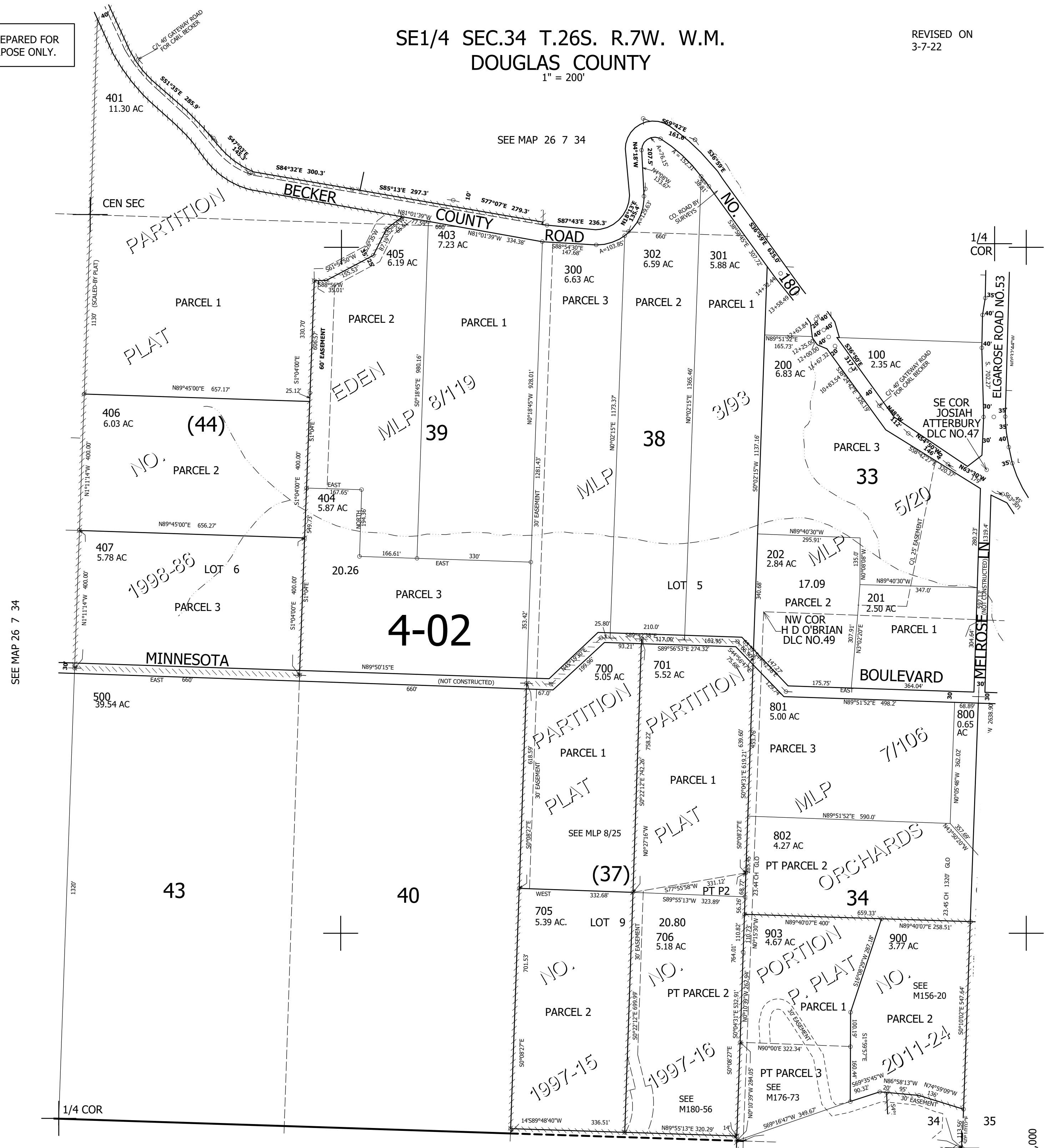
SE1/4 SEC.34 T.26S. R.7W. W.M. DOUGLAS COUNTY 1" = 200'

REVISED ON 3-7-22

26 7 34D

SEE MAP 26 7 34

CANCELLED NO'S 402 702 703 704 400 100M1 200M1 201M1 202M1 600 901 902 707



SEE MAP 26 7 34

SEE MAP 26 7 35C

595,000

SEE MAP 27 7 3

3 2

4,121,000

26 7 34D