

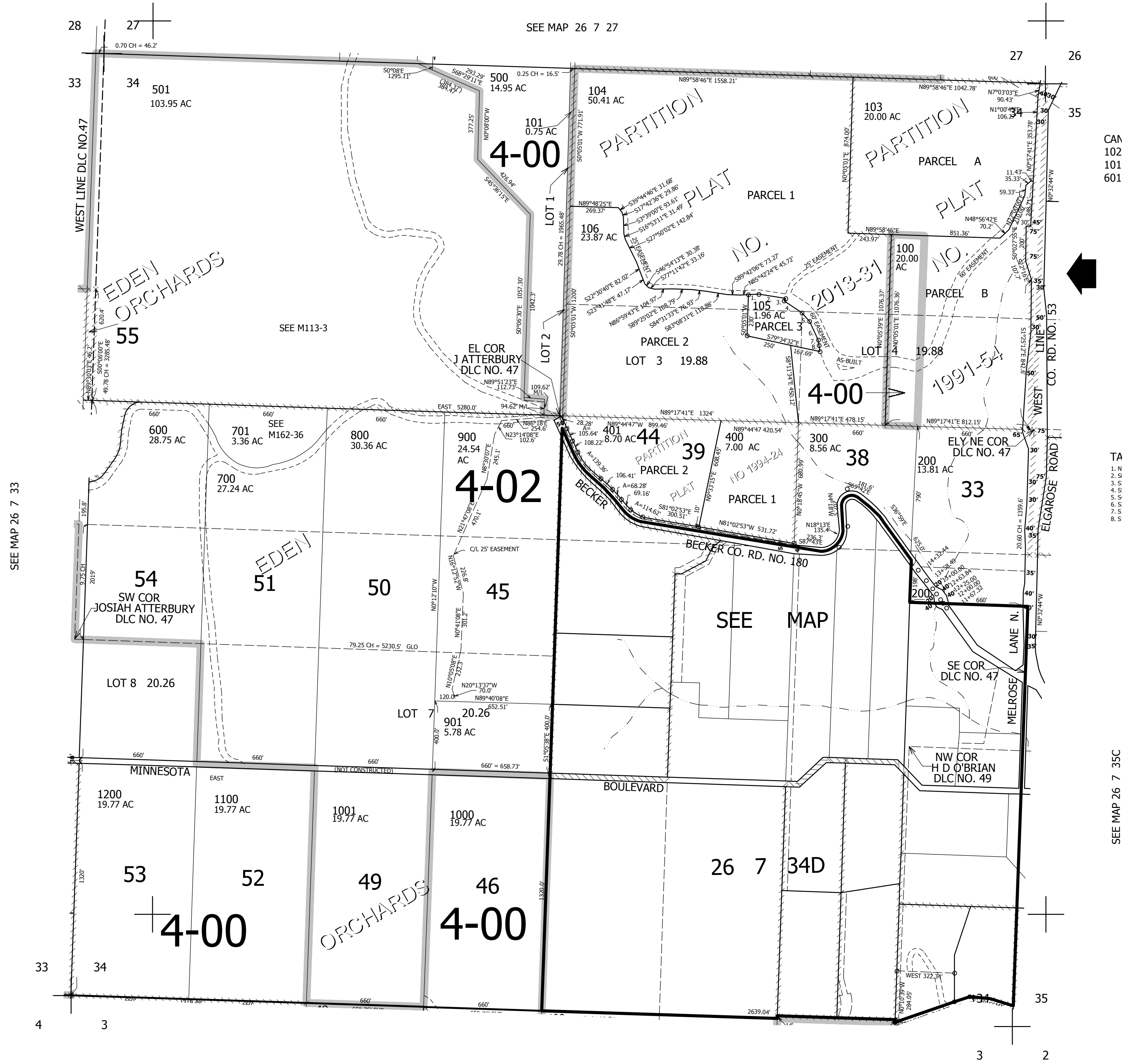
THIS MAP WAS PREPARED FOR ASSESSMENT PURPOSE ONLY.

SEC.34 T.26S. R.7W. W.M. DOUGLAS COUNTY

1" = 400'

REVISED ON 5-8-19

26 7 34 & INDEX



CANCELLED NO'S  
102 502 503  
101M1 1000M1 1001M1  
601 501A1 107

SEE MAP 26 7 35B

TAXLOT 105  
1. N85°43'35"E 58.61'  
2. S82°50'05"E 151.49'  
3. S31°55'13"W 16.24'  
4. S58°04'47"E 120.31'  
5. S43°39'28"E 64.77'  
6. S26°52'35"E 114.99'  
7. S10°07'43"E 30.41'  
8. S10°07'43"E 34.83'

SEE MAP 26 7 35C

595,000

26 7 34 & INDEX

SEE MAP 27 7 3

4,121,000