

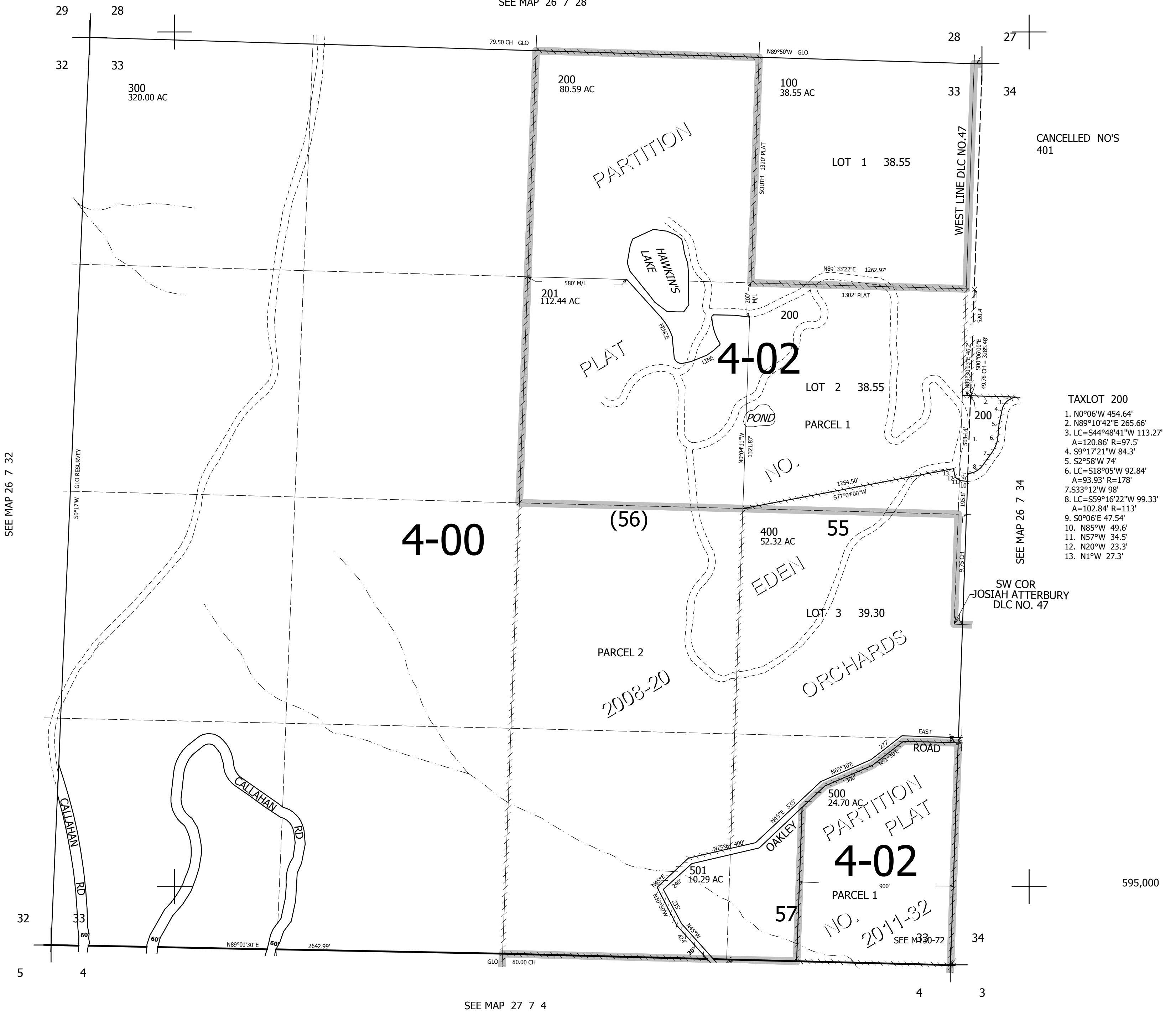
THIS MAP WAS PREPARED FOR ASSESSMENT PURPOSE ONLY.

SEC.33 T.26S. R.7W. W.M.  
DOUGLAS COUNTY  
1" = 400'

REVISED ON  
1-24-20

26 7 33

SEE MAP 26 7 28



CANCELLED NO'S  
401

- TAXLOT 200
1. N0°06'W 454.64'
  2. N89°10'42"E 265.66'
  3. LC=S44°48'41"W 113.27'  
A=120.86' R=97.5'
  4. S9°17'21"W 84.3'
  5. S2°58'W 74'
  6. LC=S18°05'W 92.84'  
A=93.93' R=178'
  7. S33°12'W 98'
  8. LC=S59°16'22"W 99.33'  
A=102.84' R=113'
  9. S0°06'E 47.54'
  10. N85°W 49.6'
  11. N57°W 34.5'
  12. N20°W 23.3'
  13. N1°W 27.3'

SEE MAP 26 7 32

SEE MAP 26 7 34

SW COR  
JOSIAH ATTERBURY  
DLC NO. 47

595,000

SEE MAP 27 7 4

4,111,000

26 7 33