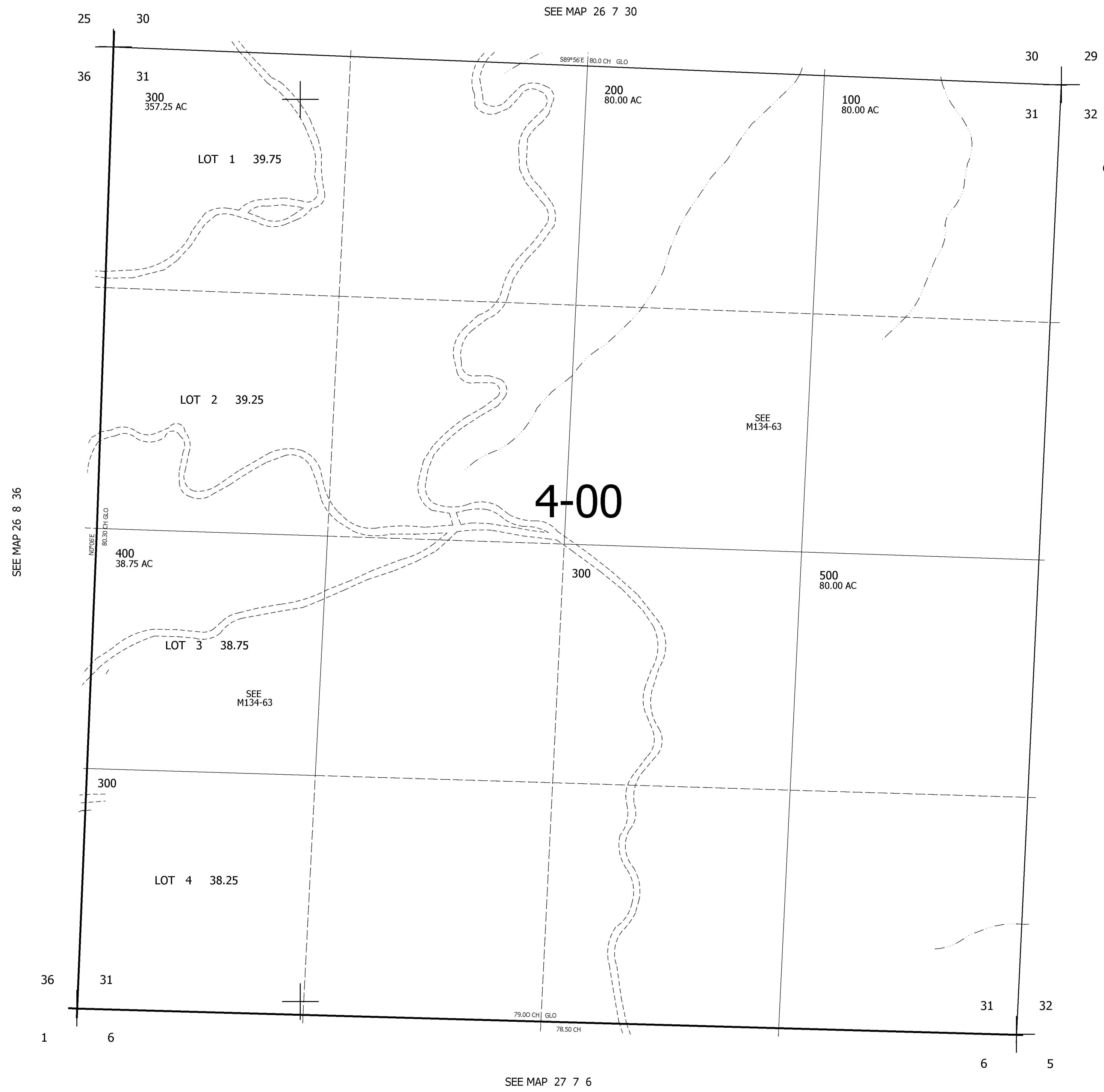


THIS MAP WAS PREPARED FOR ASSESSMENT PURPOSE ONLY.

SEC.31 T.26S. R.7W. W.M.  
DOUGLAS COUNTY  
1" = 400'

REVISED ON

26 7 31



CANCELLED NO'S

SEE MAP 26 7 32

SEE MAP 26 8 36

4-00

595,000  
4,106,000

SEE MAP 27 7 6

26 7 31