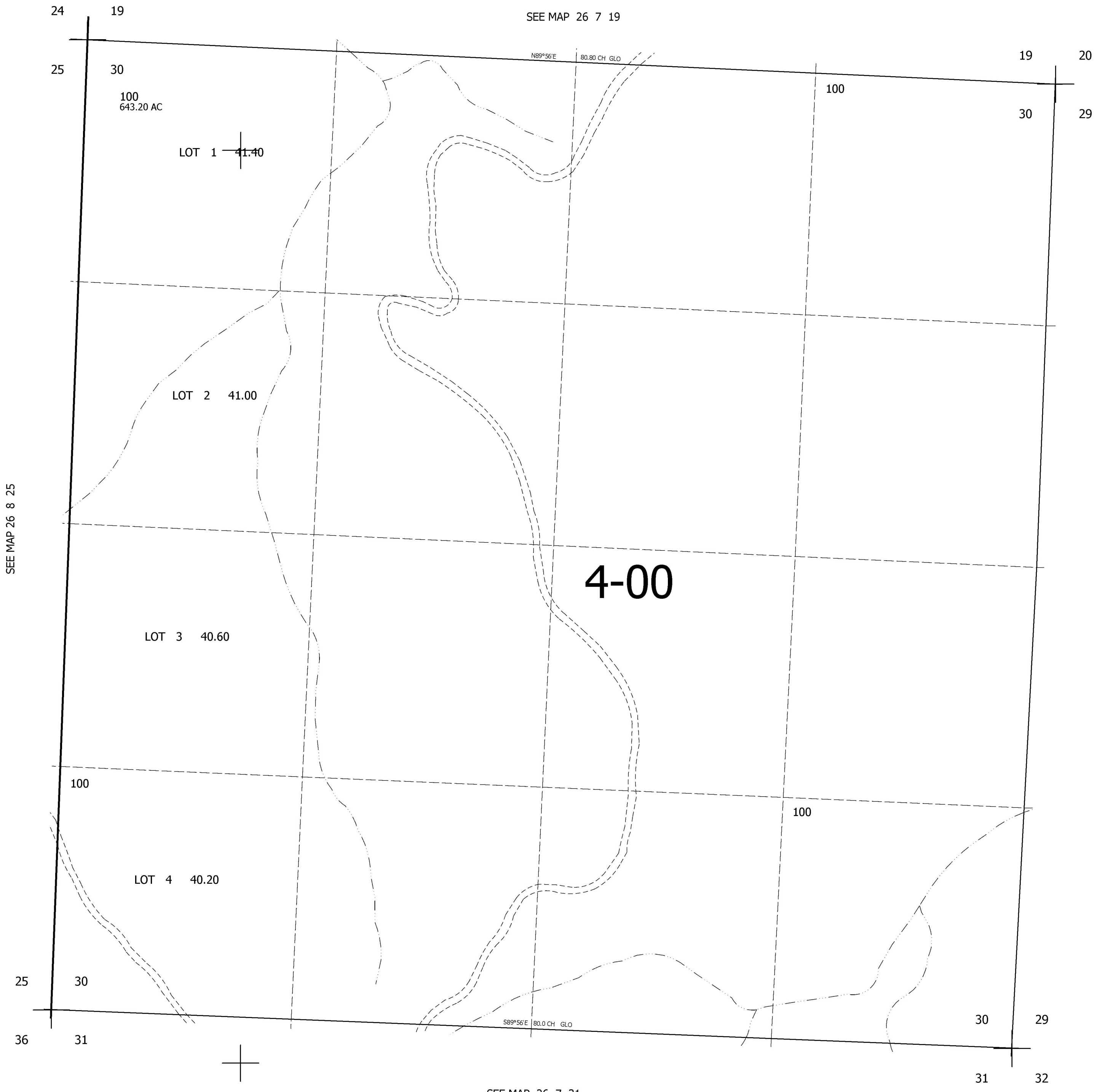


THIS MAP WAS PREPARED FOR ASSESSMENT PURPOSE ONLY.

SEC.30 T.26S. R.7W. W.M.  
DOUGLAS COUNTY  
1" = 400'

REVISED ON

26 7 30



CANCELLED NO'S

SEE MAP 26 7 29

4,106,000  
600,000

26 7 30