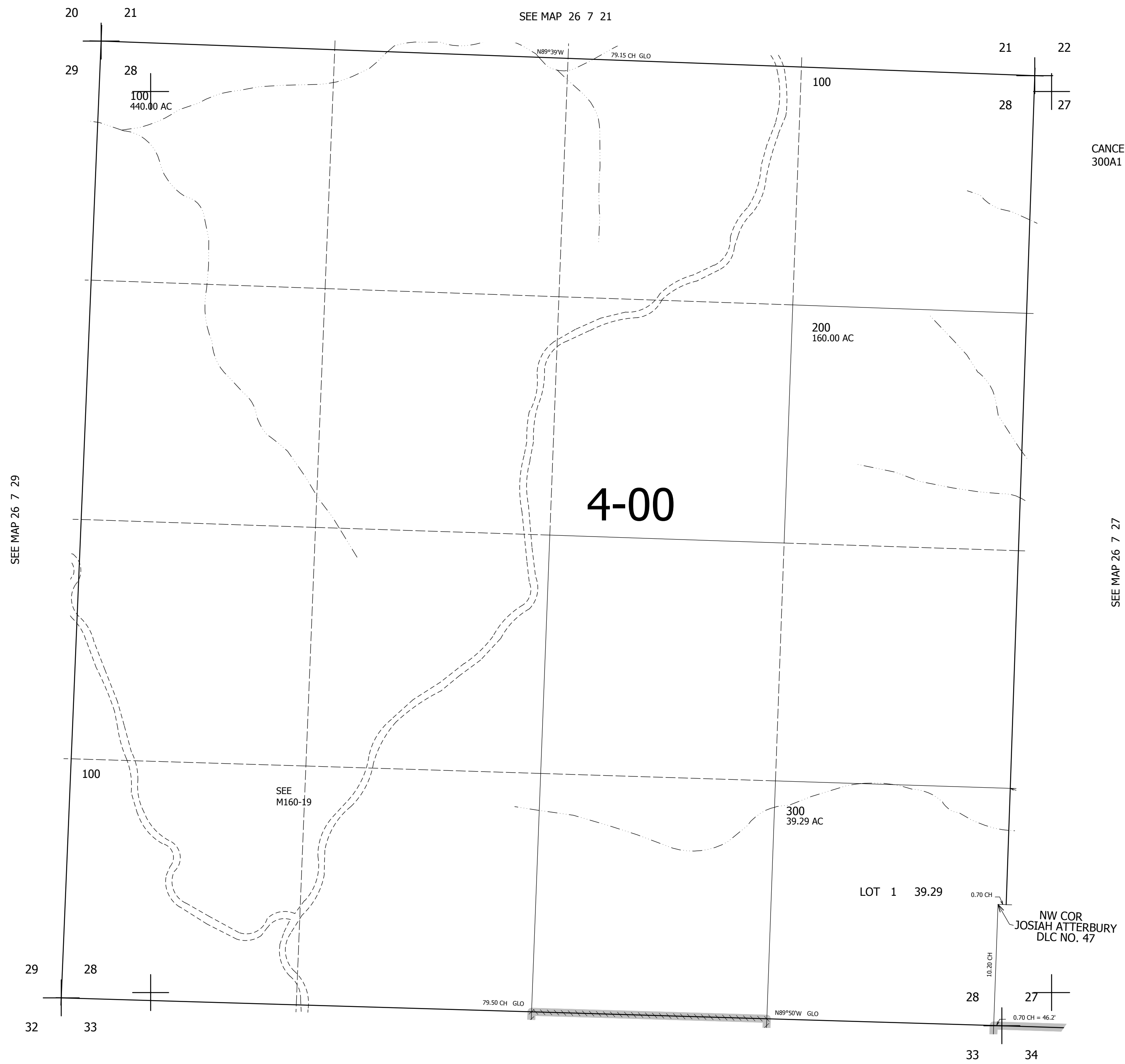


THIS MAP WAS PREPARED FOR ASSESSMENT PURPOSE ONLY.

SEC.28 T.26S. R.7W. W.M.
DOUGLAS COUNTY
1" = 400'

REVISED ON
9-13-13

26 7 28



CANCELLED NO'S
300A1

600,000

4,116,000

26 7 28