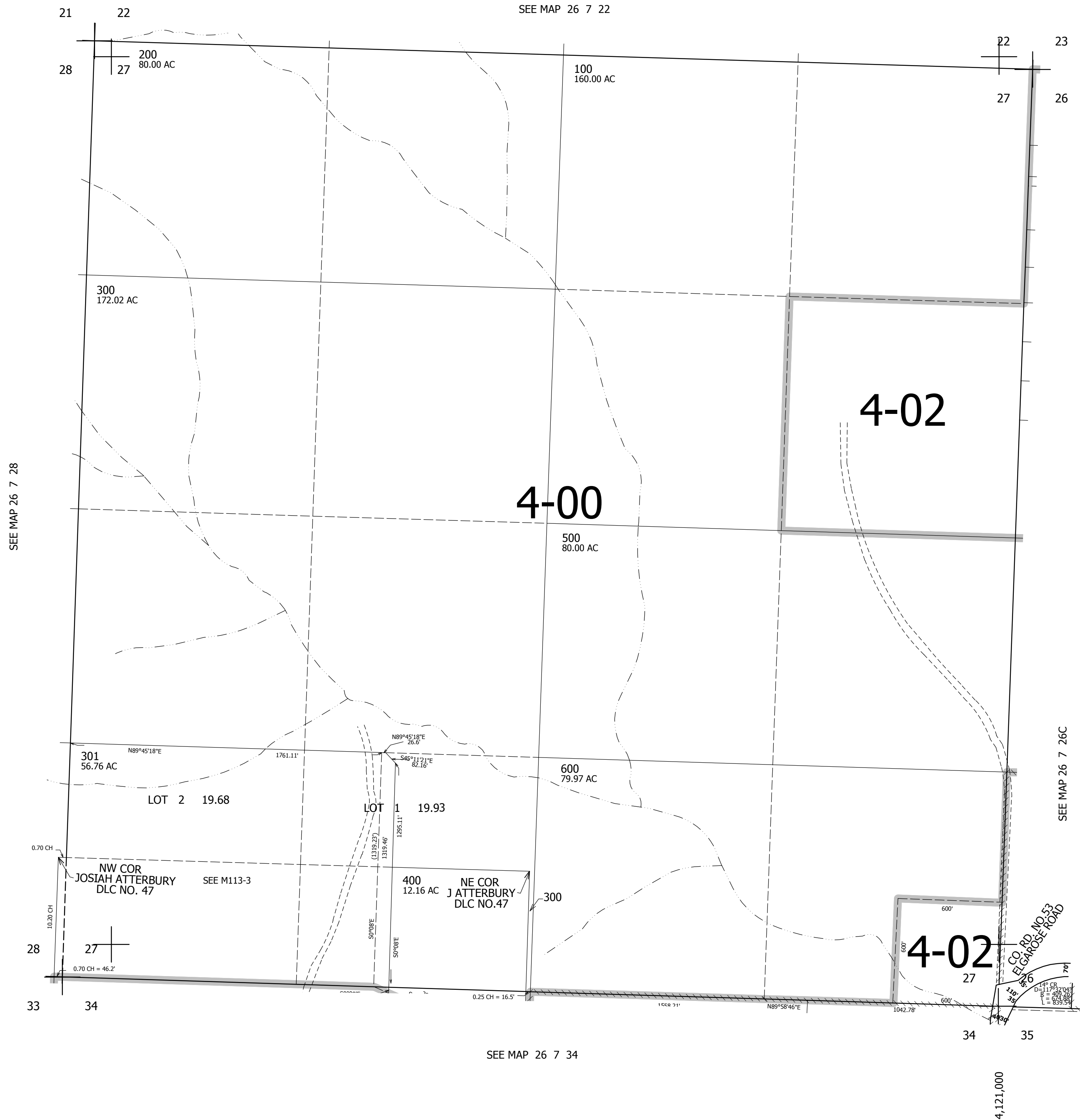


THIS MAP WAS PREPARED FOR ASSESSMENT PURPOSE ONLY.

SEC.27 T.26S. R.7W. W.M.
DOUGLAS COUNTY
1" = 400'

REVISED ON
9-13-13

26 7 27



CANCELLED NO'S
401 402 302 301A1

SEE MAP 26 7 26B

SEE MAP 26 7 26C

600,000

SEE MAP 26 7 34

26 7 27

4,121,000