

THIS MAP WAS PREPARED FOR ASSESSMENT PURPOSE ONLY.

SE1/4 SEC.26 T.26S. R.7W. W.M. DOUGLAS COUNTY

1" = 200'

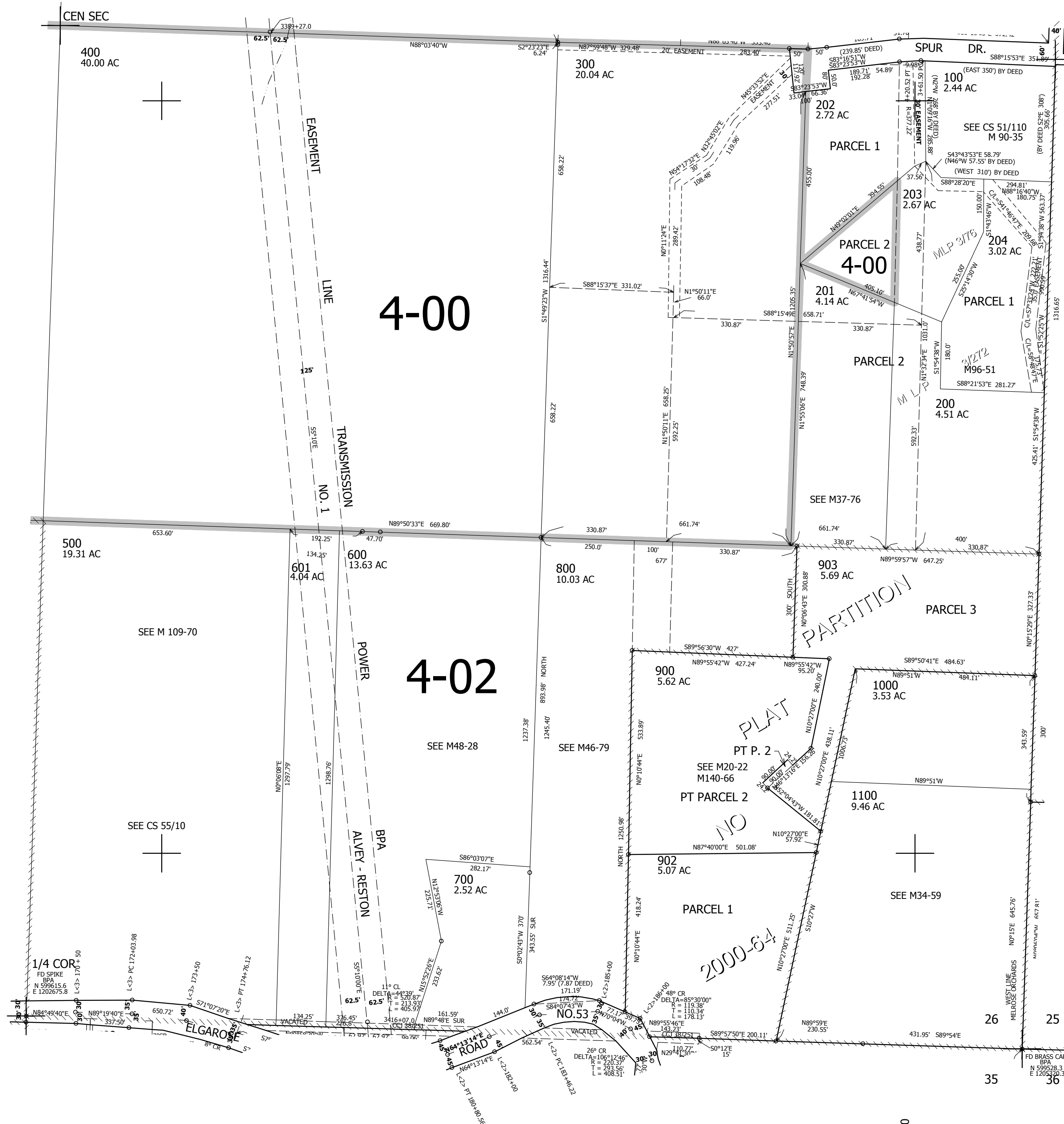
REVISED ON 5-3-13

26 7 26D

SEE MAP 26 7 26A

SEE MAP 26 7 26C

SEE MAP 26 7 25C



CANCELLED NO'S 901 904

600,000

SEE MAP 26 7 35A

4,126,000

26 7 26D