

THIS MAP WAS PREPARED FOR ASSESSMENT PURPOSE ONLY.

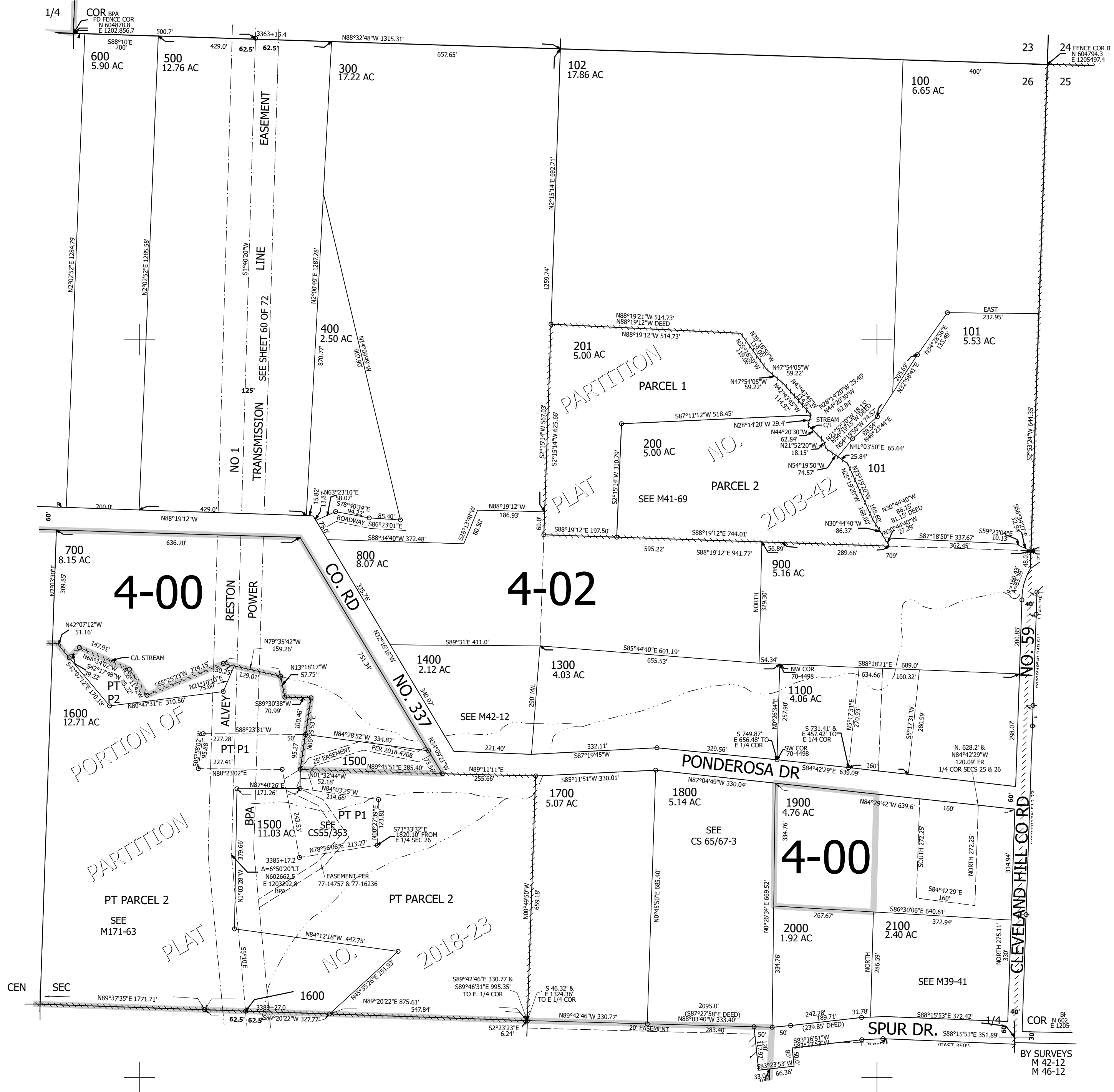
Upper Left:
123°29'53"W 43°17'18"N
4123212E 605254N ft

NE1/4 SEC.26 T.26S. R.07W. W.M.
DOUGLAS COUNTY
1" = 200'

Date Exported 2025-10-02

260726A

CANCELLED NOS:
103 1000 1101
1200 701 1501
1601 1502



260726A

Lower Right:
123°28'58"W 43°16'43"N
4121739E 601654N ft