

THIS MAP WAS PREPARED FOR ASSESSMENT PURPOSE ONLY.

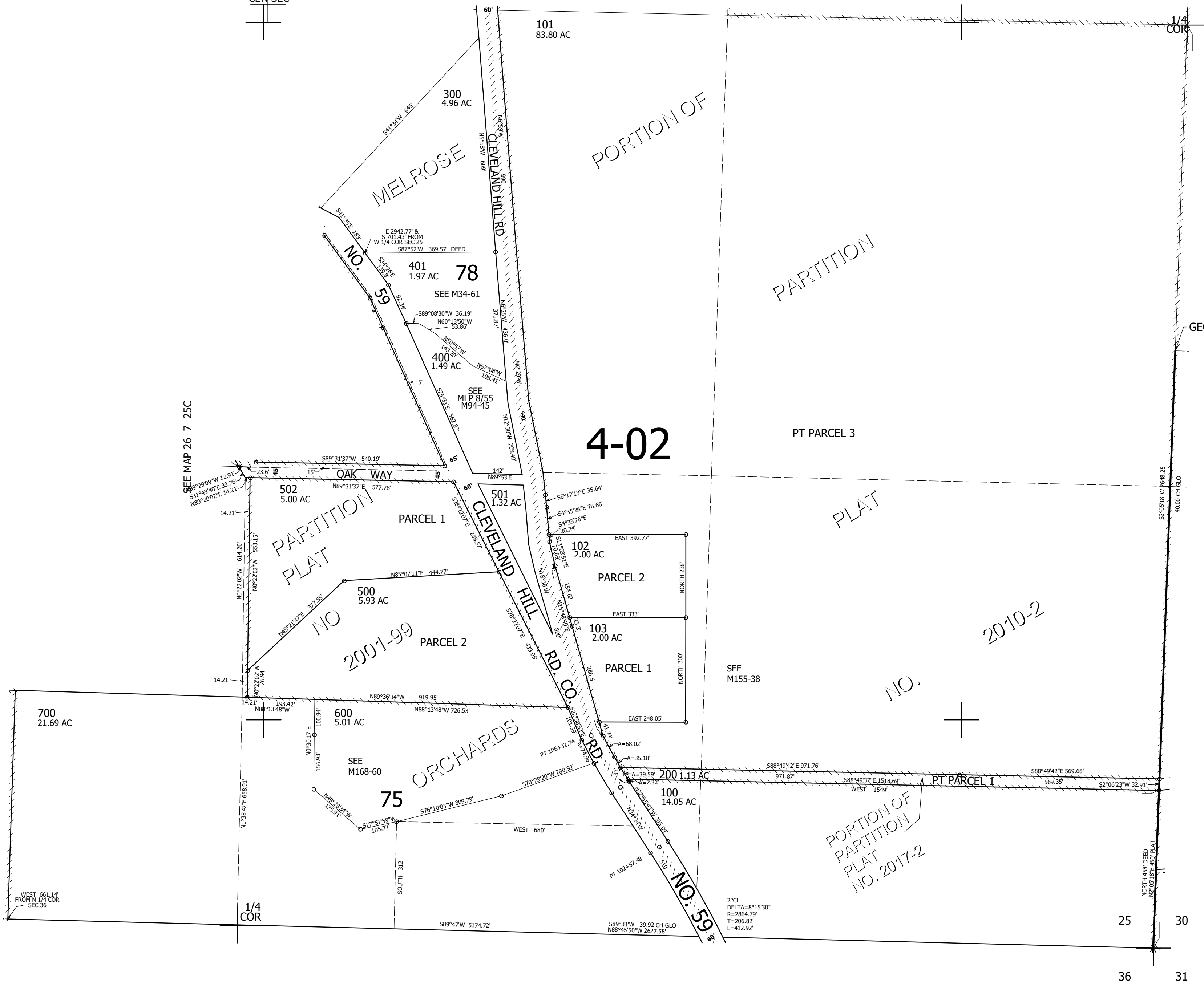
SE1/4 SEC.25 T.26S. R.7W. W.M.
DOUGLAS COUNTY
1" = 200'

REVISED ON
2-7-17

26 7 25D

SEE MAP 26 7 25A

CEN SEC



CANCELLED NO'S
601

SW COR
GEO SHAMBROOK
DLC NO.57

SEE MAP 26 6 30

600,000

SEE MAP 26 7 36A

4,131,000

26 7 25D