

THIS MAP WAS PREPARED FOR ASSESSMENT PURPOSE ONLY.

NE1/4 SEC.25 T.26S. R.7W. W.M.
DOUGLAS COUNTY

REVISED ON
10-27-14

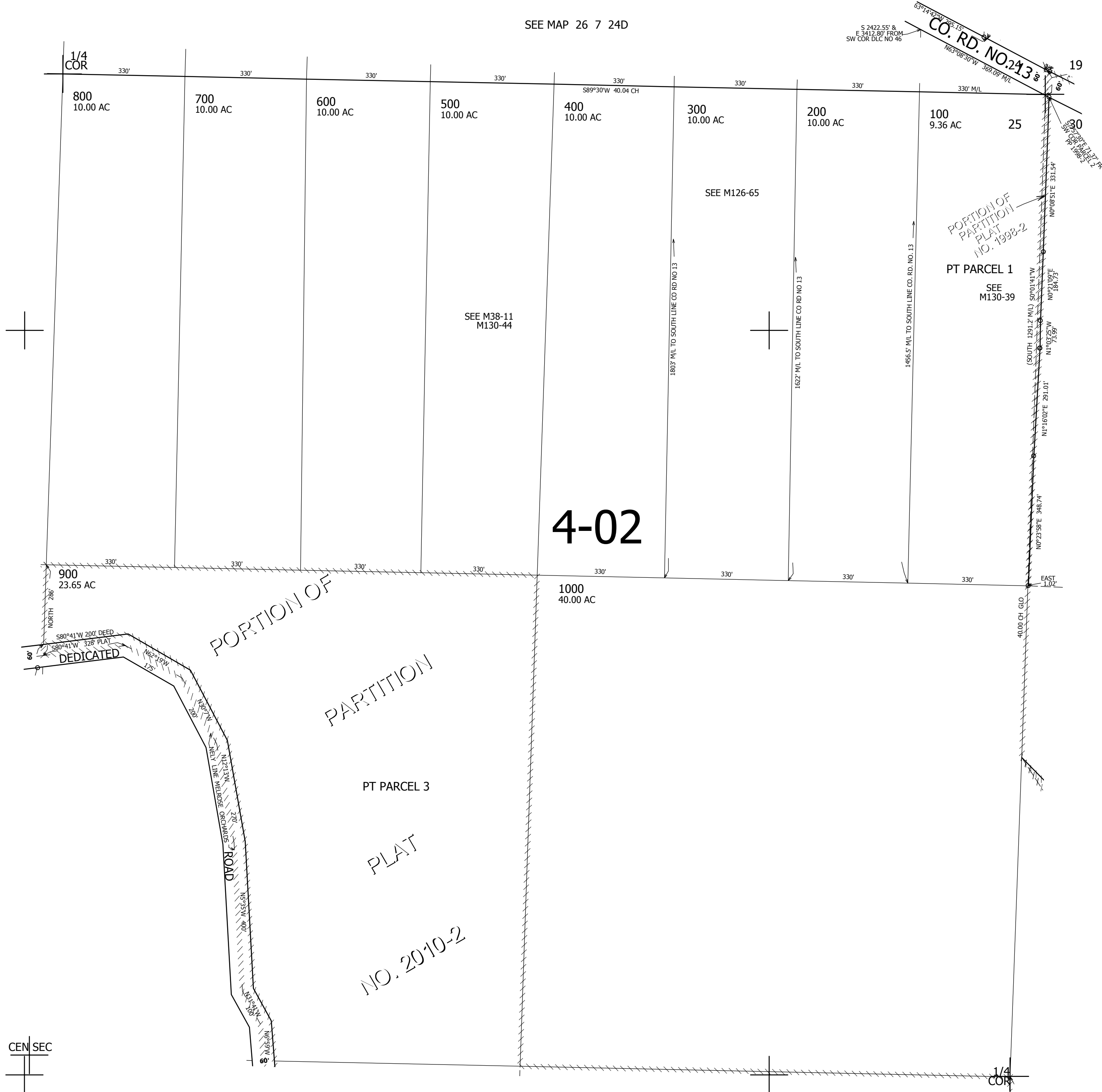
26 7 25A

SEE MAP 26 7 24D

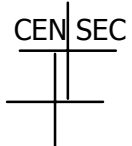
1" = 200'

SEE MAP 26 7 25B

SEE MAP 26 6 30



CANCELLED NO'S



SEE MAP 26 7 25D

4,131,000

602,000

26 7 25A