

THIS MAP WAS PREPARED FOR ASSESSMENT PURPOSE ONLY.

SE1/4 SEC.24 T.26S. R.7W. W.M.
DOUGLAS COUNTY
1" = 200'

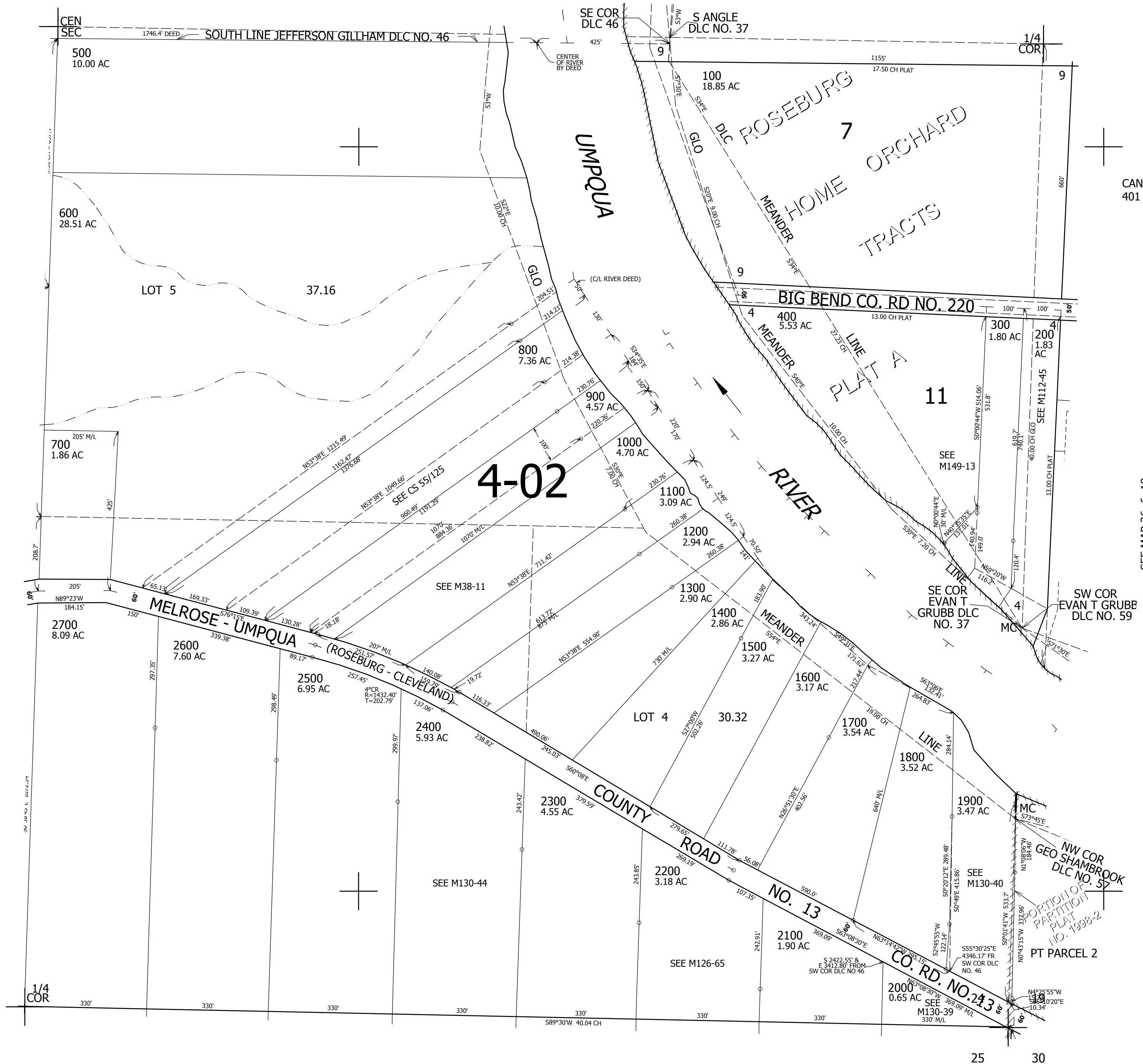
REVISED ON
6-10-11

26 7 24D

SEE MAP 26 7 24A

SEE MAP 26 7 24C

SEE MAP 26 6 19



CANCELLED NO'S
401 1801 2800

605,000

SEE MAP 26 7 25A

4,132,000

26 7 24D