

THIS MAP WAS PREPARED FOR ASSESSMENT PURPOSE ONLY.

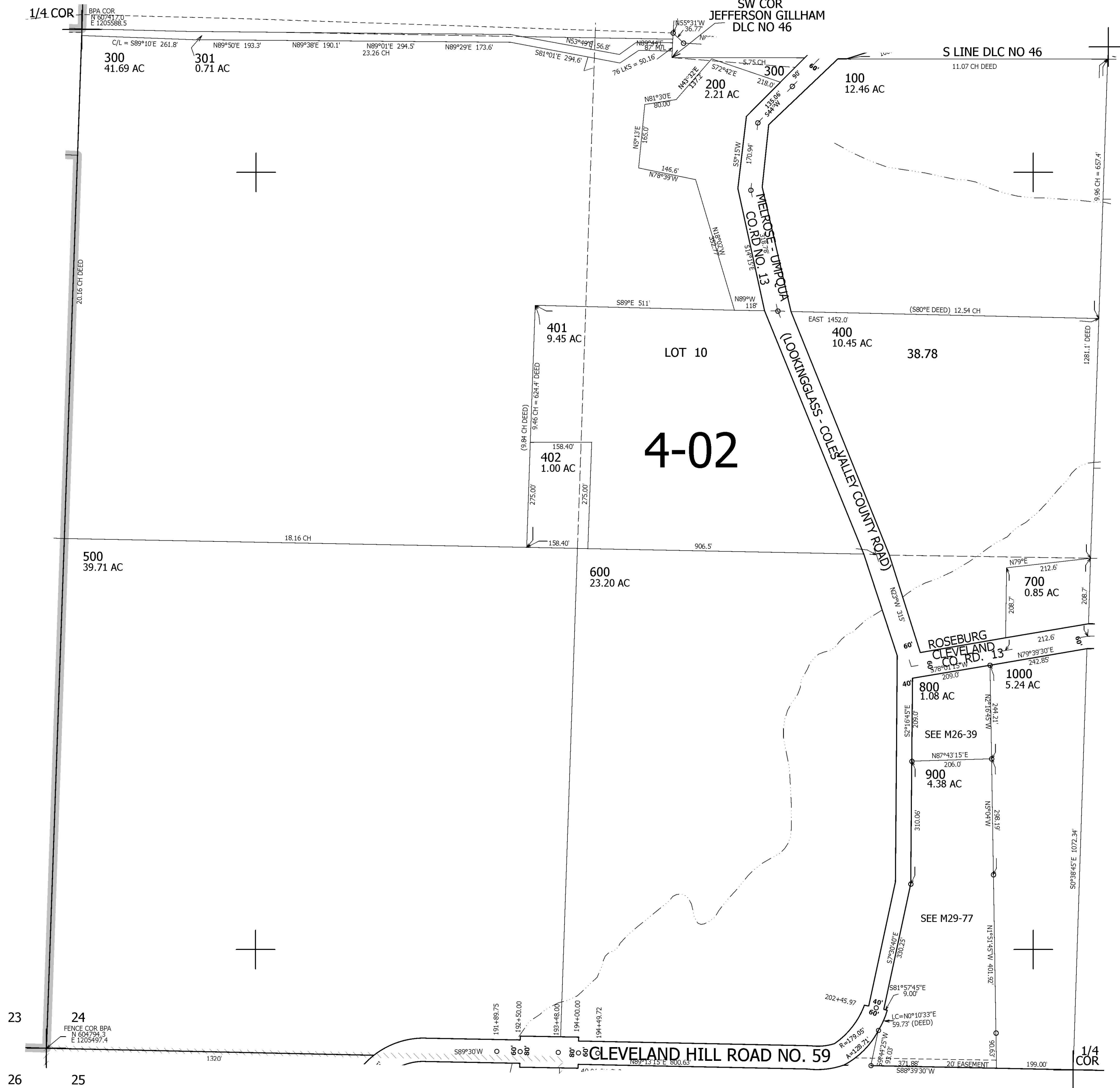
SW1/4 SEC.24 T.26S. R.7W. W.M. DOUGLAS COUNTY

1" = 200'

REVISED ON
4-25-07

26 7 24C

SEE MAP 26 7 24B



CANCELLED NO'S
800M1 901

SEE MAP 26 7 25

SEE MAP 26 7 24D

SEE MAP 26 7 25B

26 7 24C