

THIS MAP WAS PREPARED FOR ASSESSMENT PURPOSE ONLY.

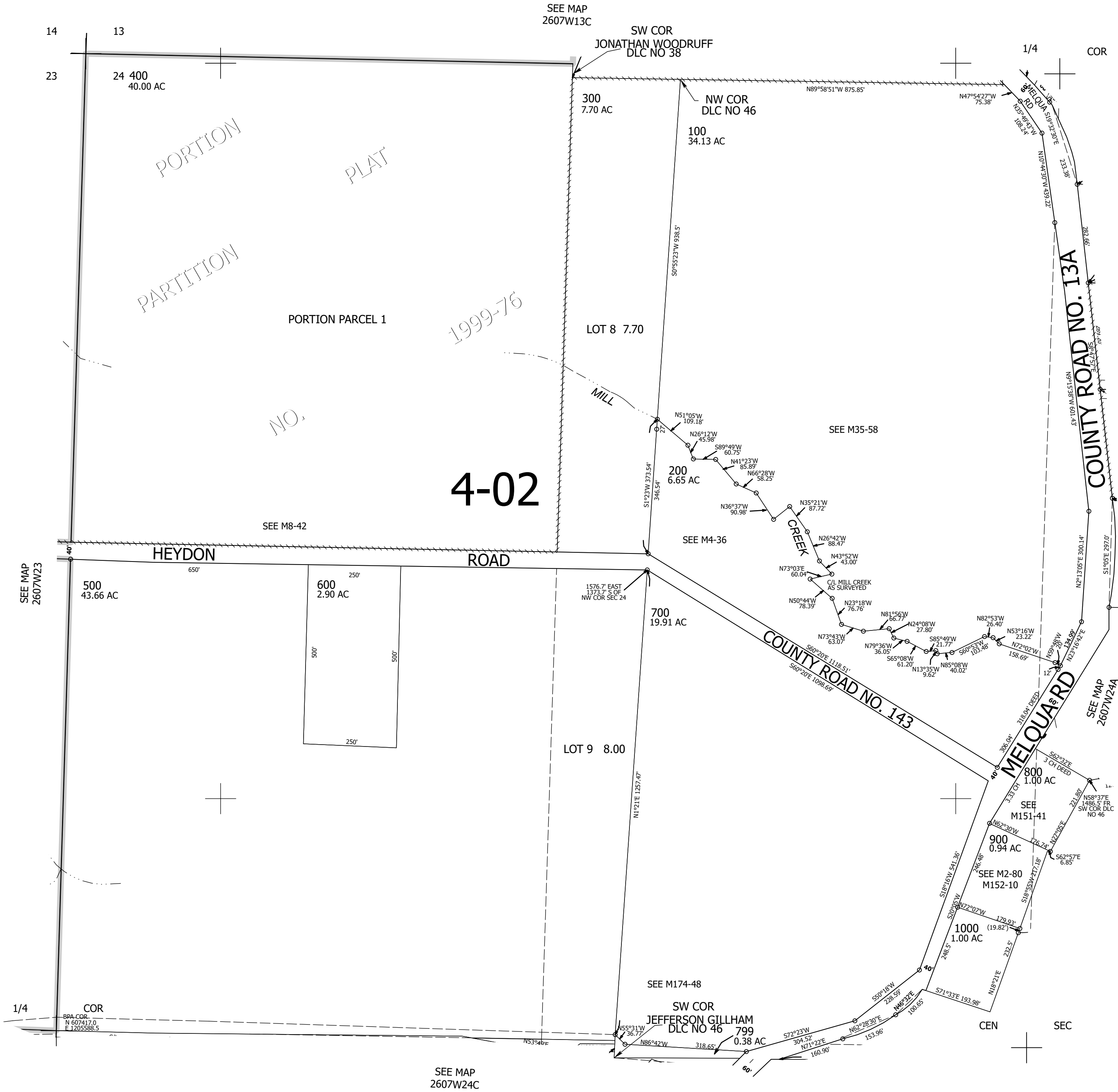
Upper Left:
123°29'18"W 43°18'10"N
4125990E 610416N ft

NW1/4 SEC.24 T.26S. R.07W. W.M.
DOUGLAS COUNTY
1" = 200'

Date Exported 2024-02-20

260724B

CANCELLED NOS:
200M1 800M1



260724B

Lower Right:
123°28'23"W 43°17'37"N
4129915E 606939N ft