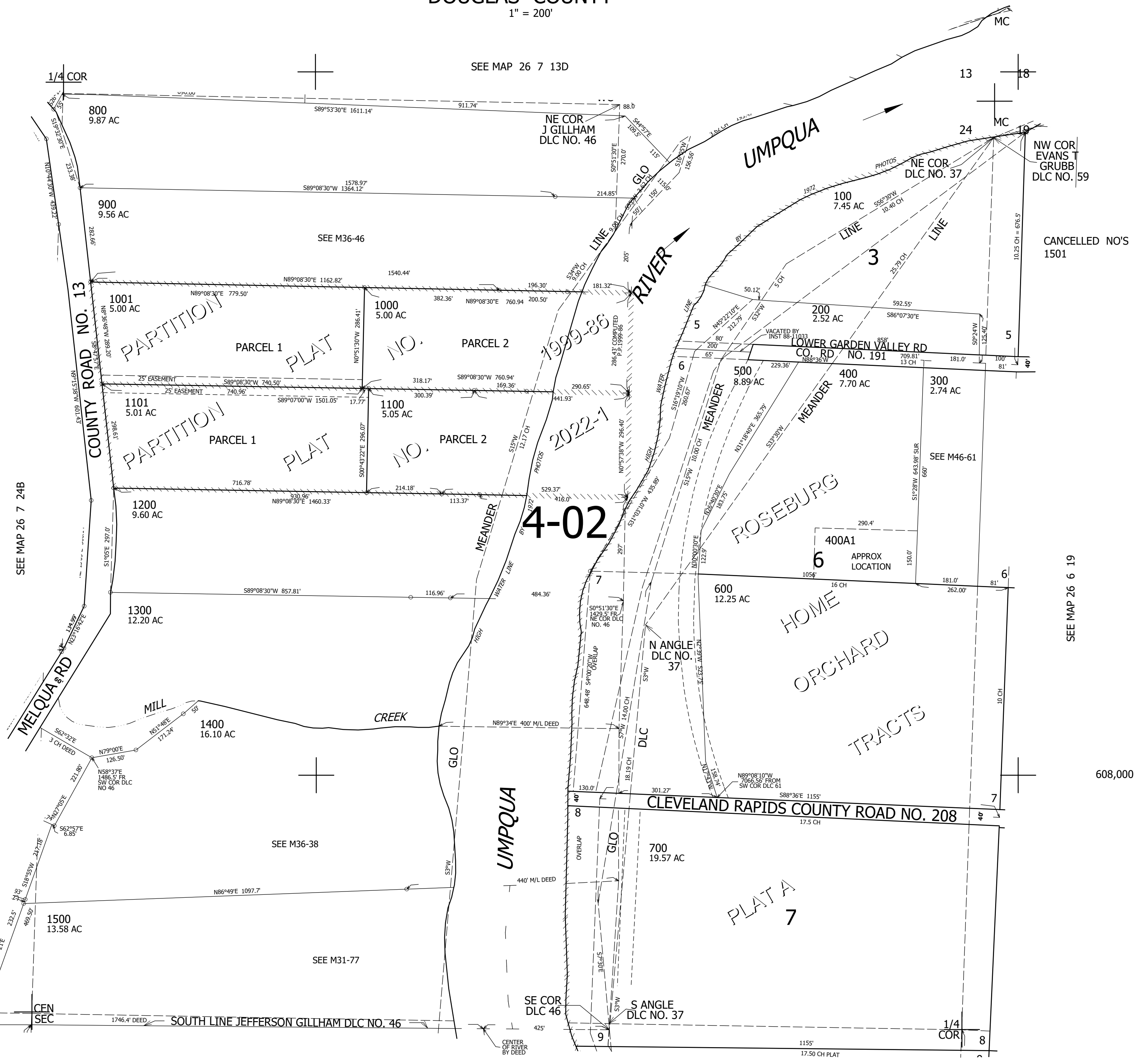


THIS MAP WAS PREPARED FOR ASSESSMENT PURPOSE ONLY.

NE1/4 SEC.24 T.26S. R.7W. W.M.
DOUGLAS COUNTY
1" = 200'

REVISED ON
1-21-22

26 7 24A



SEE MAP 26 7 24B

SEE MAP 26 7 13D

CANCELLED NO'S
1501

SEE MAP 26 6 19

608,000

SEE MAP 26 7 24D

4,132,000

26 7 24A