

THIS MAP WAS PREPARED FOR ASSESSMENT PURPOSE ONLY.

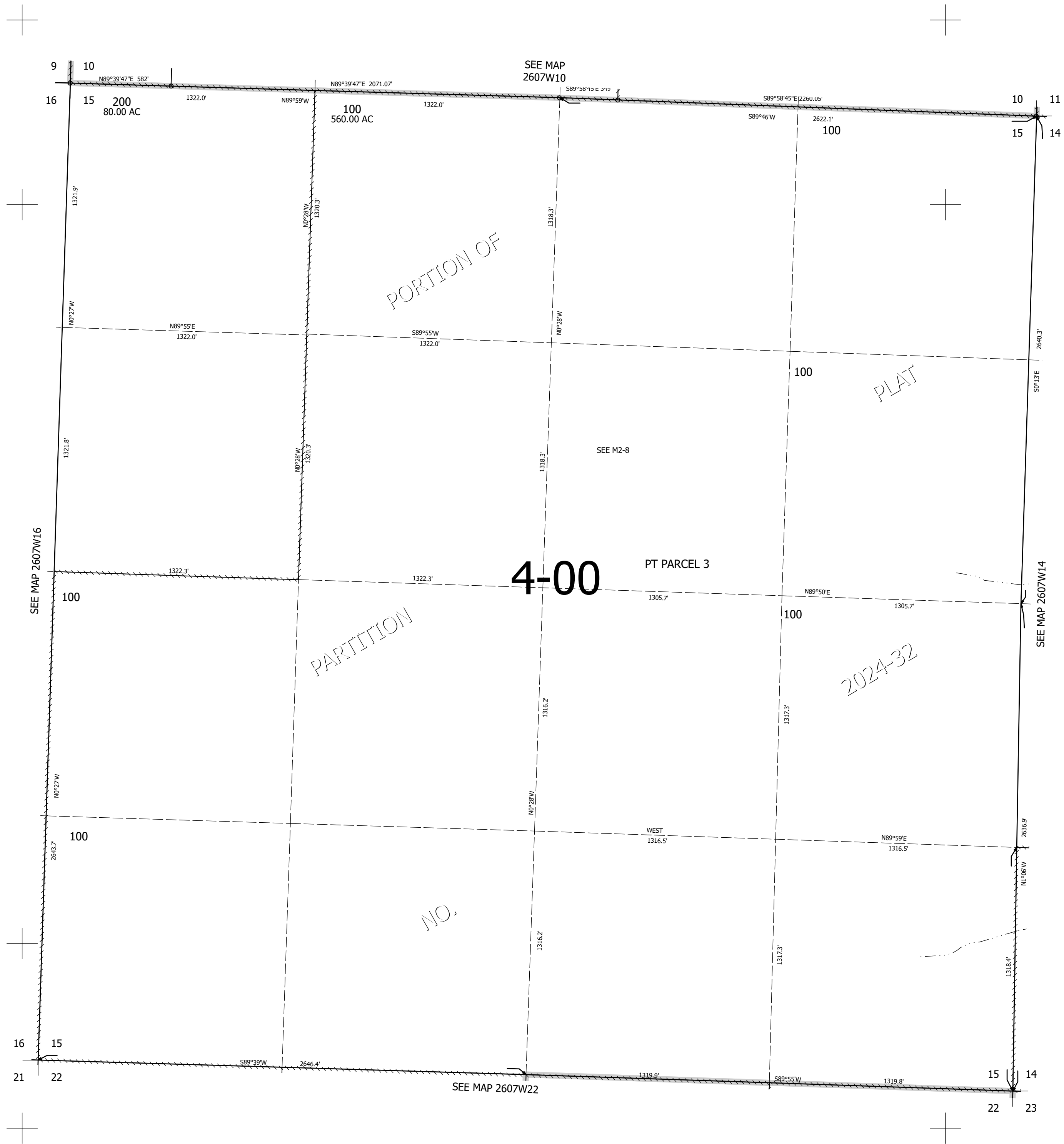
Upper Left:  
123°31'51"W 43°19'5"N  
4114875E 616451N ft

SEC.15 T.26S. R.07W. W.M.  
DOUGLAS COUNTY  
1" = 400'

Date Exported 2024-12-05

260715

CANCELLED NOS:  
300 400



260715

Lower Right:  
123°30'2"W 43°17'59"N  
4122724E 609496N ft