

THIS MAP WAS PREPARED FOR ASSESSMENT PURPOSE ONLY.

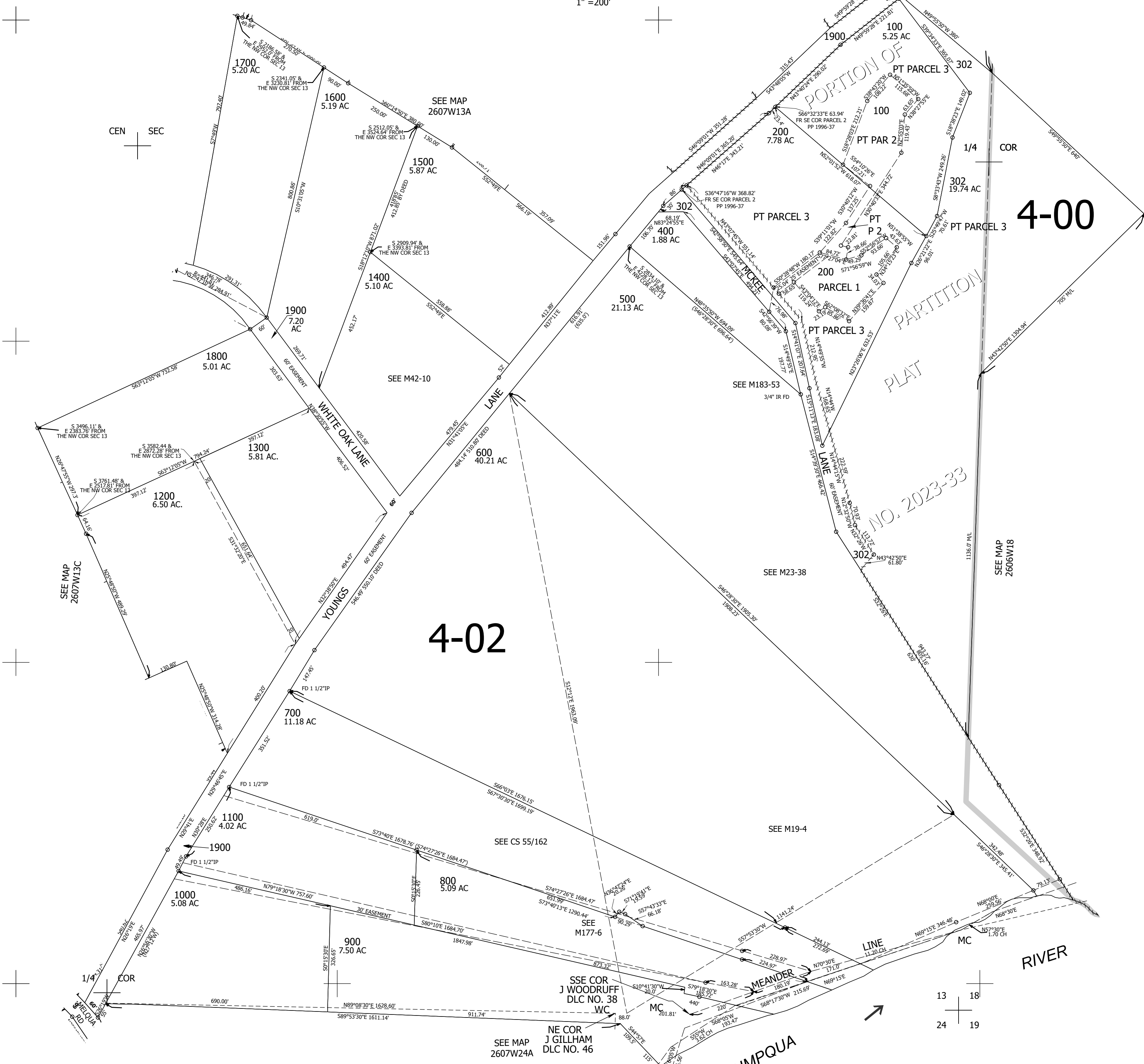
Upper Left:
123°28'41"W 43°18'37"N
4128840E 613126N ft

SE1/4 SEC.13 T.26S. R.07W. W.M.
DOUGLAS COUNTY
1" = 200'

Date Exported 2025-02-19

260713D

CANCELLED NOS:
1301 701 101
102 201 202
301 103 300
303 304 305



4-00

4-02

NO. 2023-33

13 18
24 19

260713D

Lower Right:
123°27'46"W 43°18'4"N
4132764E 609649N ft