

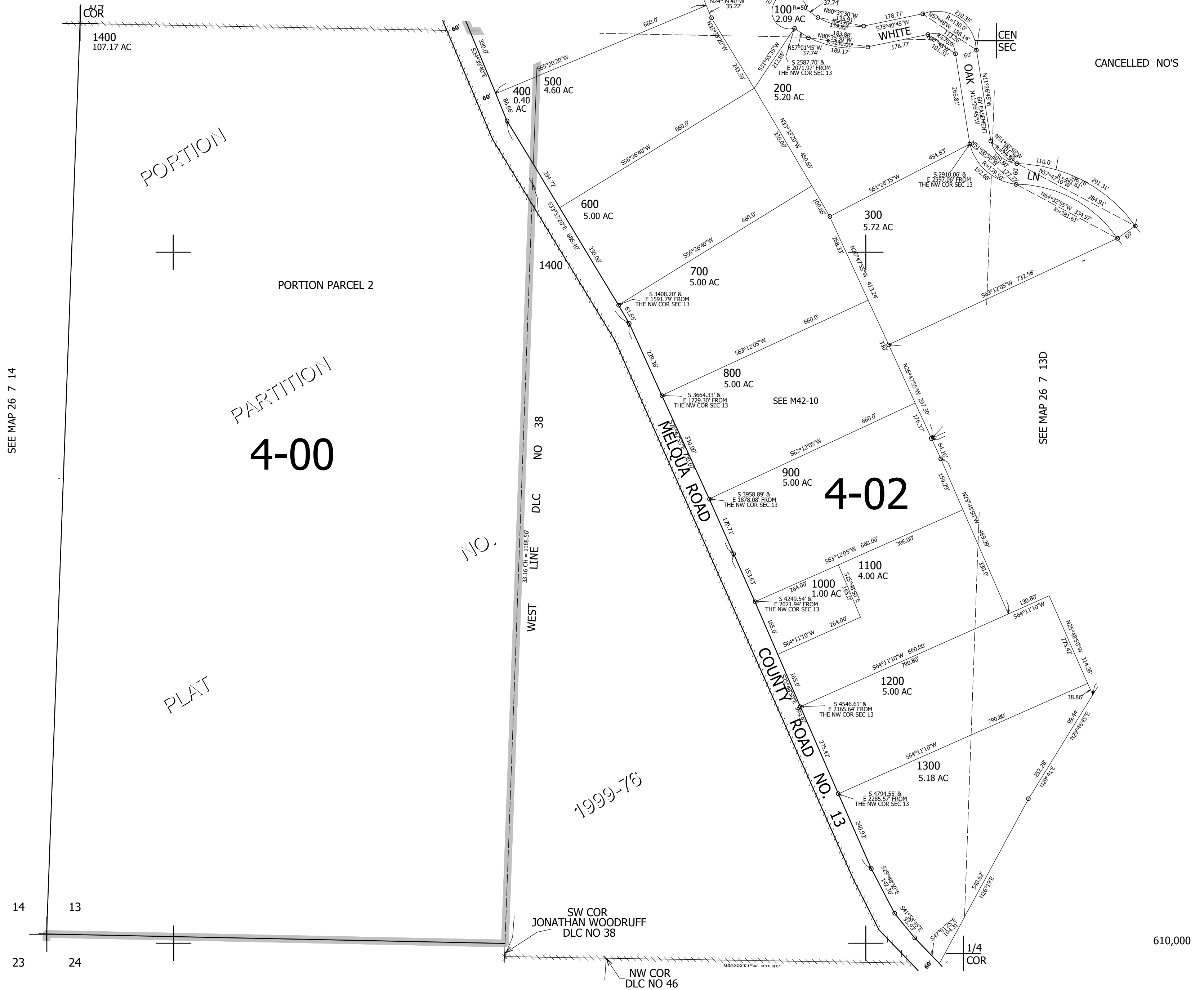
THIS MAP WAS PREPARED FOR ASSESSMENT PURPOSE ONLY.

SW1/4 SEC.13 T.26S. R.7W. W.M.  
DOUGLAS COUNTY  
1" = 200'

REVISED ON  
9-23-99

26 7 13C

SEE MAP 26 7 13B



CANCELLED NO'S

610,000

26 7 13C