

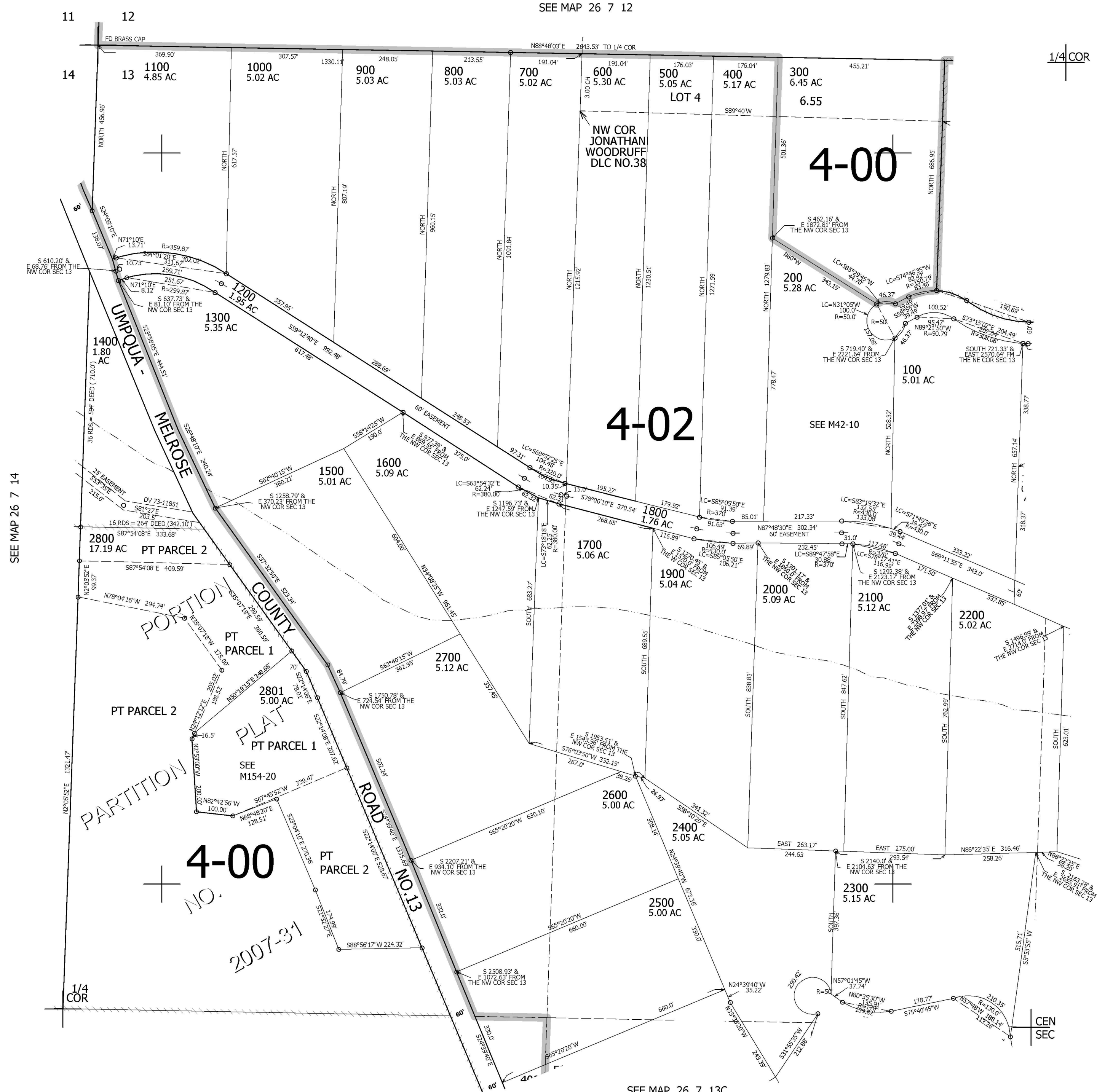
THIS MAP WAS PREPARED FOR ASSESSMENT PURPOSE ONLY.

NW1/4 SEC.13 T.26S. R.7W. W.M.  
DOUGLAS COUNTY  
1" = 200'

REVISED ON  
12-3-07

26 7 13B

SEE MAP 26 7 12



1/4 COR

CANCELLED NO'S  
2802 2803 2804

SEE MAP 26 7 14

SEE MAP 26 7 13A

4-00  
NO.  
2007-31

613,000

SEE MAP 26 7 13C

4,129,000

26 7 13B