

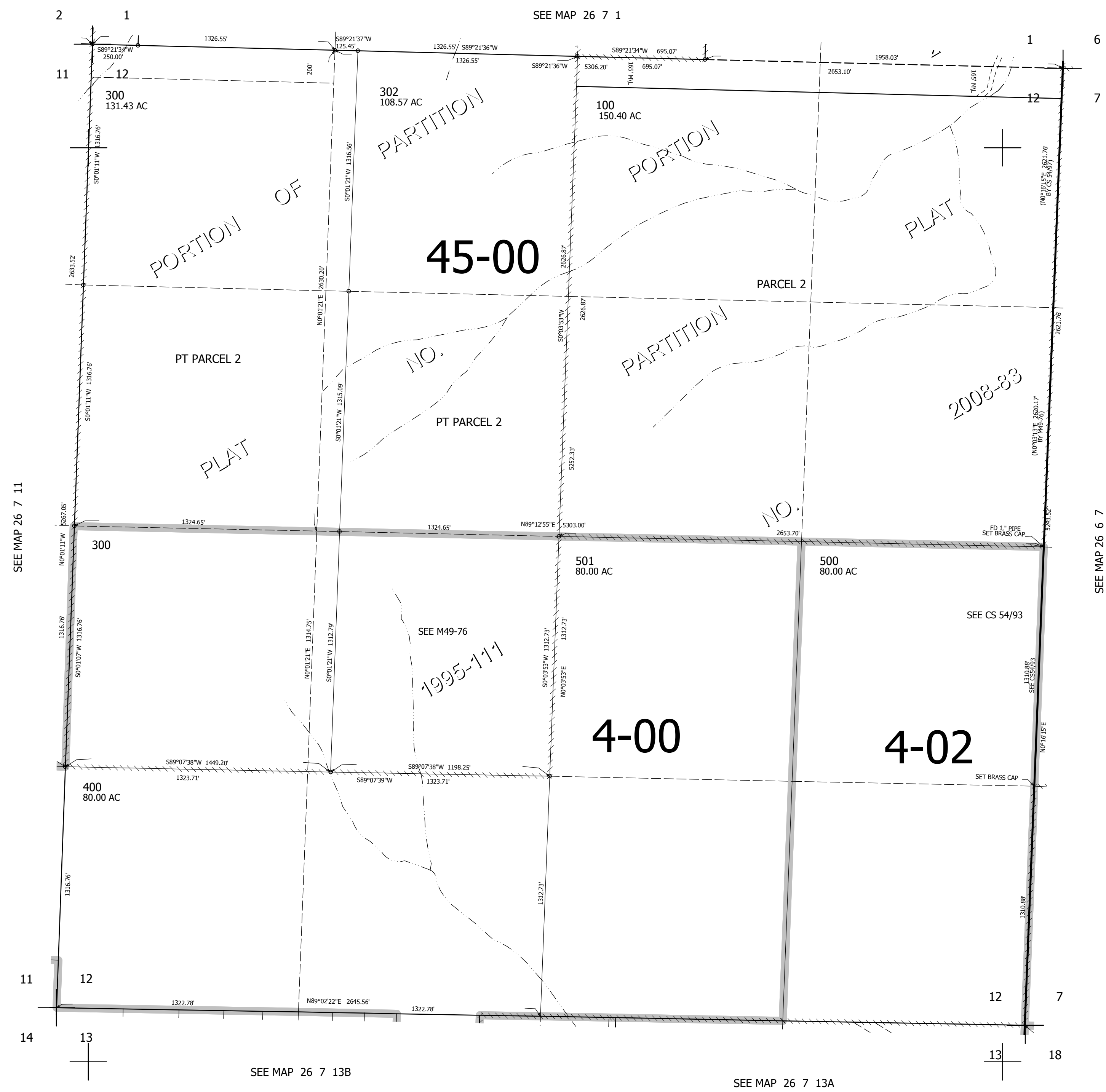
THIS MAP WAS PREPARED FOR ASSESSMENT PURPOSE ONLY.

SEC.12 T.26S. R.7W. W.M.
DOUGLAS COUNTY

REVISED ON
2-14-12

26 7 12

1" = 400'



CANCELLED NO'S
200 301 101

SEE MAP 26 7 11

SEE MAP 26 7 1

SEE MAP 26 6 7

SEE MAP 26 7 13B

SEE MAP 26 7 13A

615,000

4,132,000

26 7 12