

THIS MAP WAS PREPARED FOR ASSESSMENT PURPOSE ONLY.

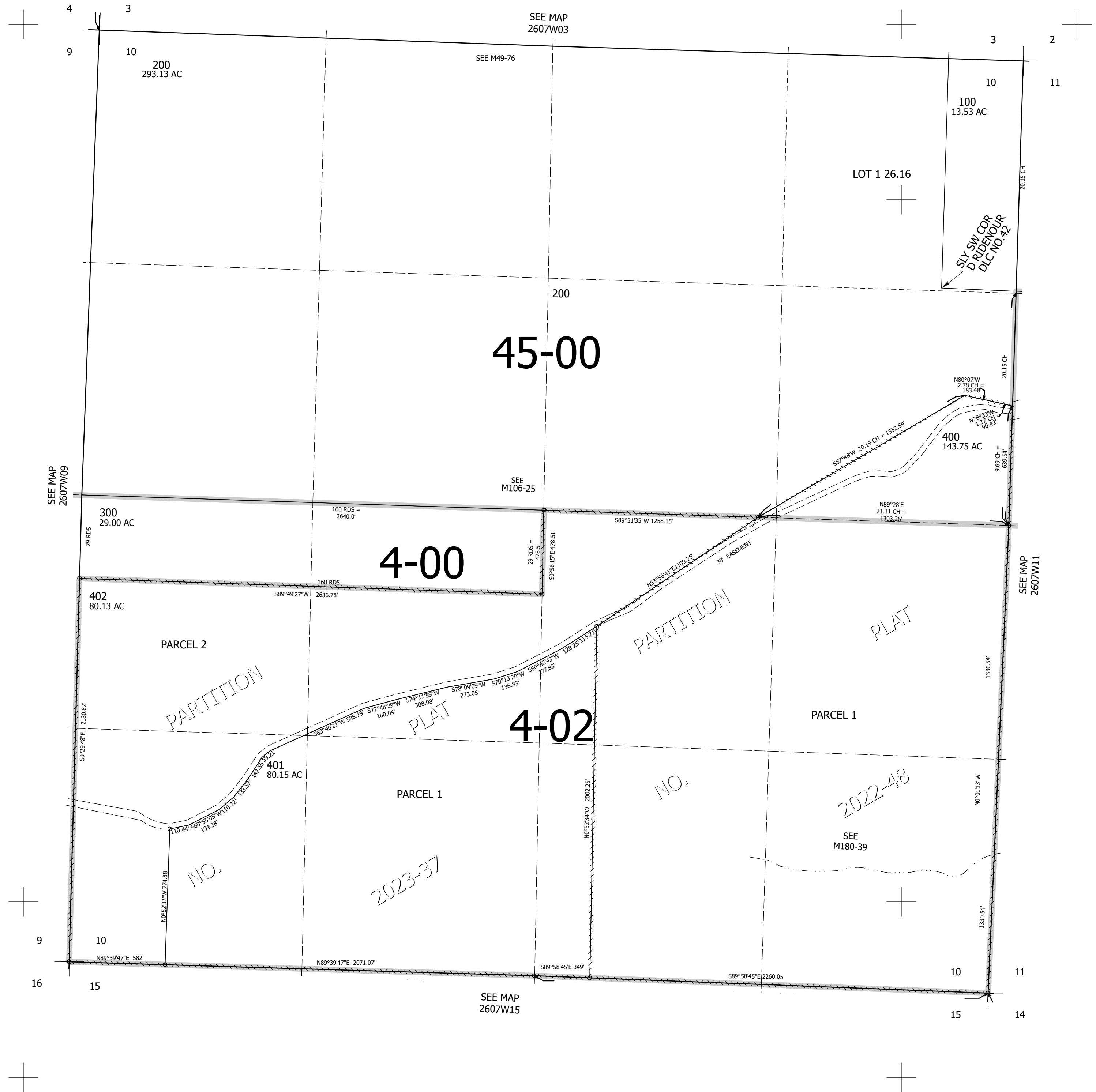
Upper Left:
123°31'52"W 43°19'57"N
4115047E 621726N ft

SEC.10 T.26S. R.07W. W.M.
DOUGLAS COUNTY
1" = 400'

Date Exported 2023-12-05

260710

CANCELLED NOS:
100M1 200M1 300M1
500



260710

Lower Right:
123°30'2"W 43°18'51"N
4122896E 614771N ft